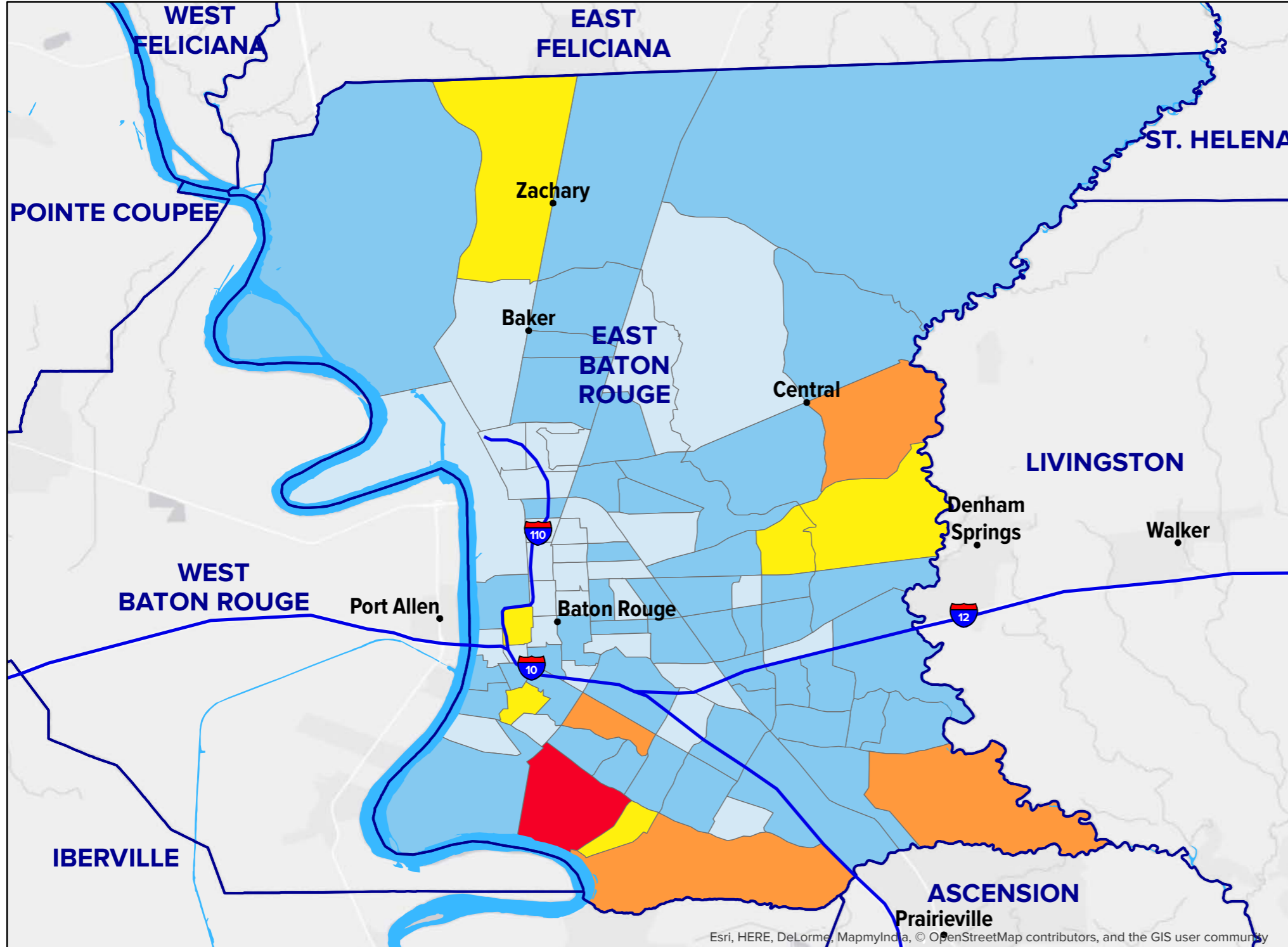


# Population Growth Rate 2010–2016 for EBR



## Population Growth Rate 2010–2016 for EBR

- Interstate Highway
- MSA Parish Boundary
- Census Block Group Boundary
- 0 %
- 0 - 7.8 %
- 7.8 - 10.7 %
- 13 - 17.6 %
- 28.1 %

Source:  
 1. 2010 Population by U.S. Census, 2016 Population by Esri, accessed through Esri Business Analyst  
 2. Geographical features and area from 2016 U.S. Census TIGER/Line® Shapefile

Esri, HERE, DeLorme, MapmyIndia, © OpenStreetMap contributors, and the GIS user community

