

COVID-19 Indicator Dashboard

November 17, 2020

Lead Researcher:
Andrew Fitzgerald



Baton Rouge Area Chamber®

Capital Region COVID-19 Indicator Dashboard

How has unemployment been impacted during the pandemic?

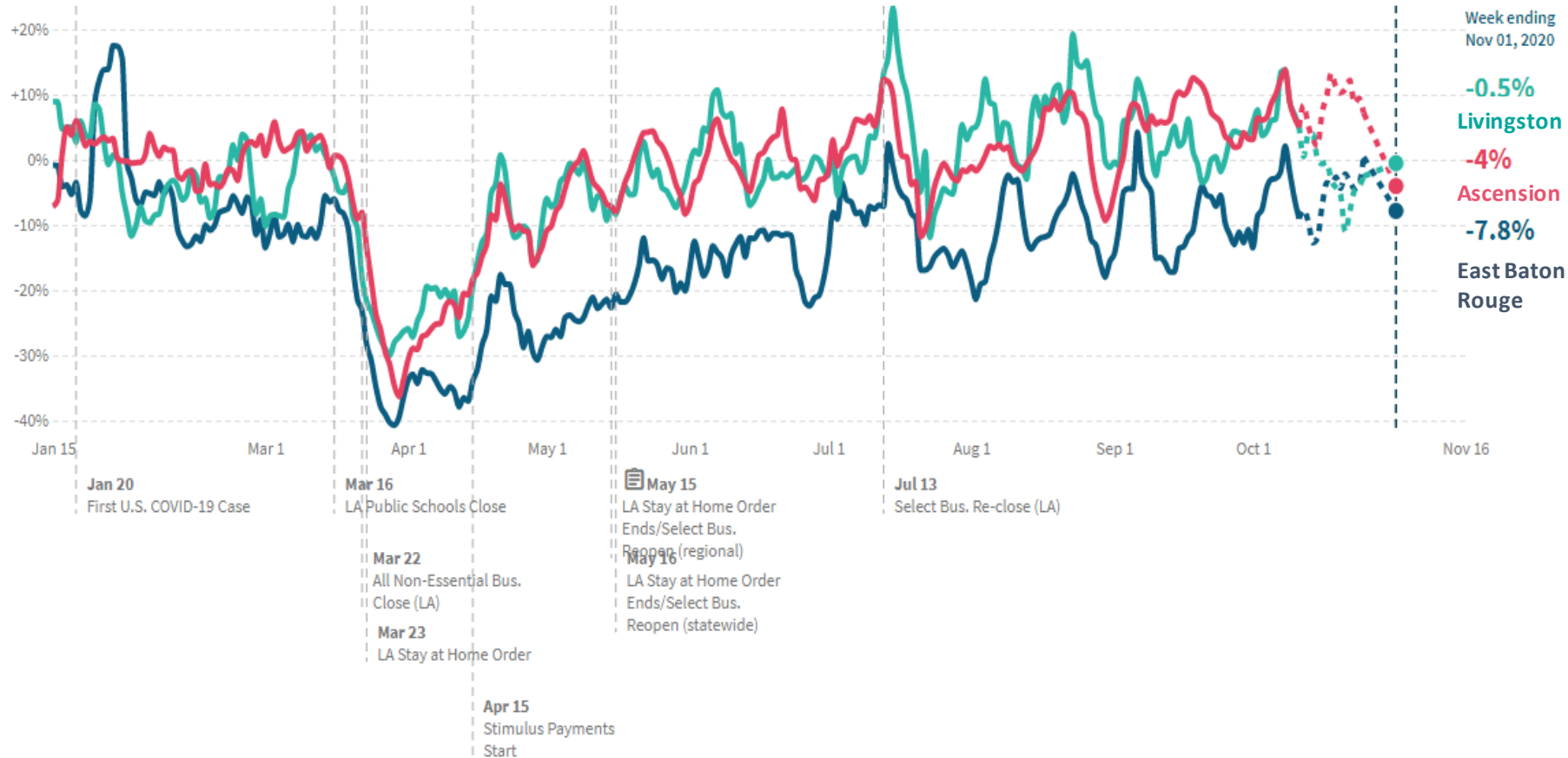
Parish	10-24-2020	10-31-2020	11-07-2020
Ascension	2,681	2,355	2,153
East Baton Rouge	13,173	11,540	10,496
East Feliciana	386	354	314
Iberville	1,071	912	792
Livingston	2,511	2,224	2,038
Point Coupee	538	498	164
St. Helena	293	241	227
West Baton Rouge	745	649	622
West Feliciana	179	171	148
BR MSA total	21,577	18,944	16,954

- Combined weekly claims have dropped for the 16th consecutive week and are down 71% in that timeframe.
- Claims were down more than 10% over the week and fell in every Capital Region parish. This is the lowest number of claims since March 28.

Sources: Louisiana Workforce Commission, BRAC Analysis.
Dates signify initial plus continued claims for week ending on that day.

Capital Region COVID-19 Indicator Dashboard

How has consumer spending been impacted by the pandemic?



- Spending is below pre-COVID levels in the three largest Capital Region parishes.
- Spending is down significantly in West Baton Rouge (-41.8%) but up in East Feliciana (+17.0%).
- Another round of federal stimulus through enhanced unemployment benefits, a one-time stimulus payment, or more money allocated to PPP would likely increase spending.

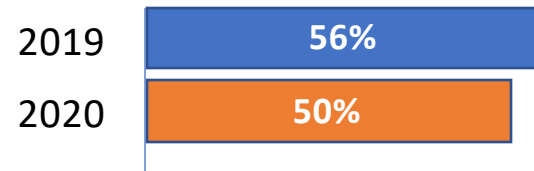
Sources: Opportunity Insights; dotted lines indicate data is preliminary.

Capital Region COVID-19 Indicator Dashboard

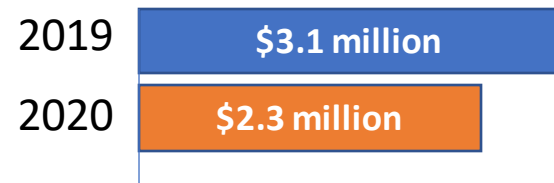
How has travel been impacted during the pandemic?

Hotel Occupancy

November 1 – November 7



Revenue November 1 – November 7

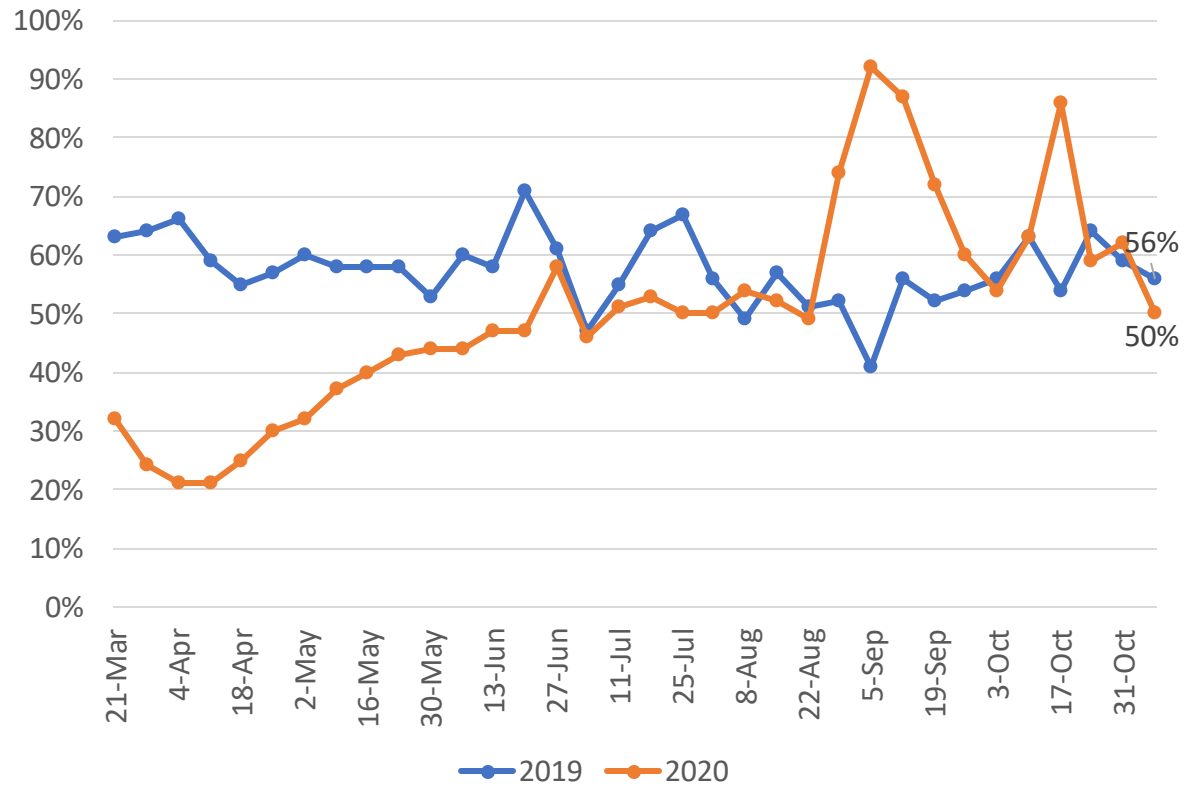


- 2020 occupancy rates are slightly lower than those of 2019.
- In addition, revenues are down both over-the-week and over-the-year.
- A recent national survey of hotel owners found that 67% say they could not survive another six months at current occupancy levels, implying that the uptick over the last month may have been crucial for local hotels.

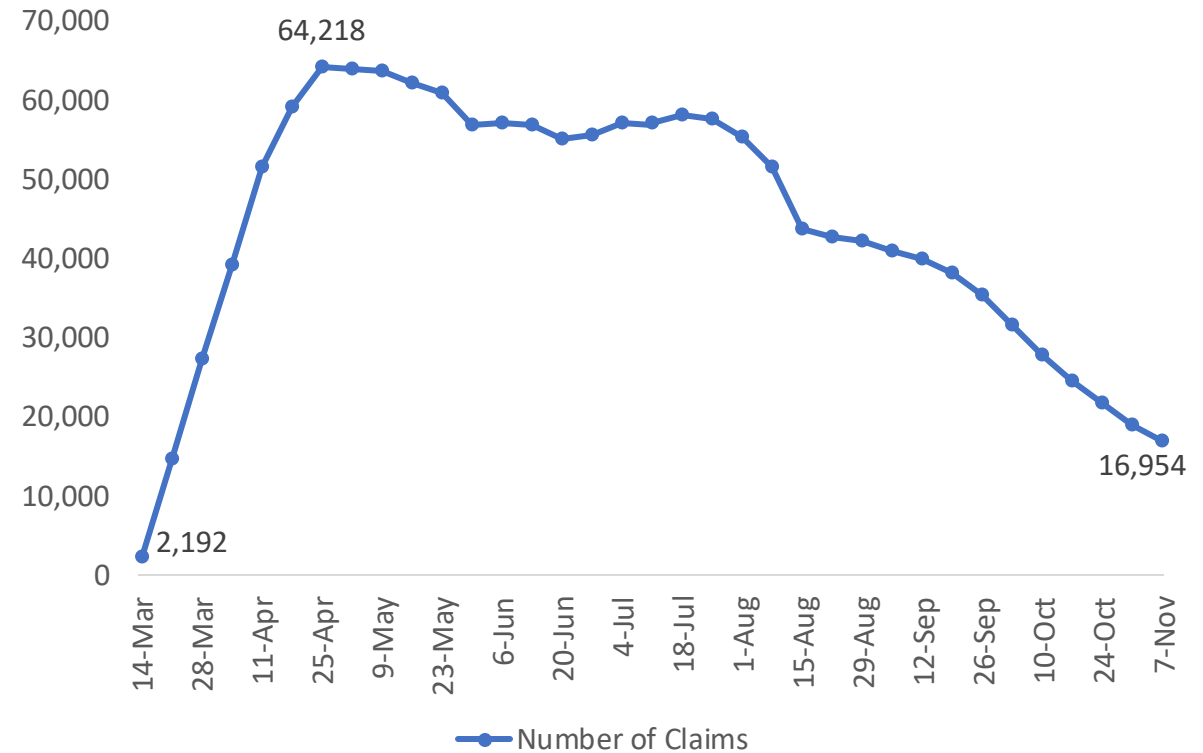
Capital Region COVID-19 Indicator Dashboard

Both hotel occupancy and unemployment claims have shown marked improvement from the height of the pandemic.

Hotel Occupancy



Weekly Combined UI Claims



Capital Region COVID-19 Indicator Dashboard

How has travel been impacted during the pandemic?

CATS Transportation Ridership

Week Ending	2019 Ridership	2020 Ridership	%age Change
April 25th	46,838	15,846	-66.2%
May 30th	47,289	21,115	-55.3%
June 20th	46,730	23,944	-48.8%
July 4th	46,773	22,558	-51.8%
August 15th	50,714	25,192	-50.3%
September 12th	53,930	23,503	-56.4%
October 17th	47,187	26,998	-42.8%
November 14th	46,246	19,709	-57.4%

- CATS ridership was down slightly over the week and is still much lower percentagewise than 2019.

Residential Travel

Parish	Retail & Recreation	Grocery and Pharmacy	Parks	Transit Stations	Workplace	Residential
Ascension	-11%	-4%	-	-	-16%	+5%
East Baton Rouge	-20%	-8%	-9%	-19%	-27%	+7%
East Feliciana	-	-	-	-	-18%	-
Iberville	-52%	-15%	-	-21%	-21%	+4%
Livingston	-5%	+2%	+32%	0%	-14%	+4%
Point Coupee	-	-	-	-	-18%	-
St. Helena	-	-	-	-	-14%	-
West Baton Rouge	-12%	-3%	-	-14%	-21%	+5%
West Feliciana	-	-	-	-	-18%	-

- Most parishes saw a drop in travel to work over the week.

Source: Google Mobility Change Report, November 13th, 2020;
Capital Area Transit System.