

# COVID-19 Indicator Dashboard

December 1, 2020

Lead Researcher:  
Andrew Fitzgerald



Baton Rouge Area Chamber®

# Capital Region COVID-19 Indicator Dashboard

How has unemployment been impacted during the pandemic?

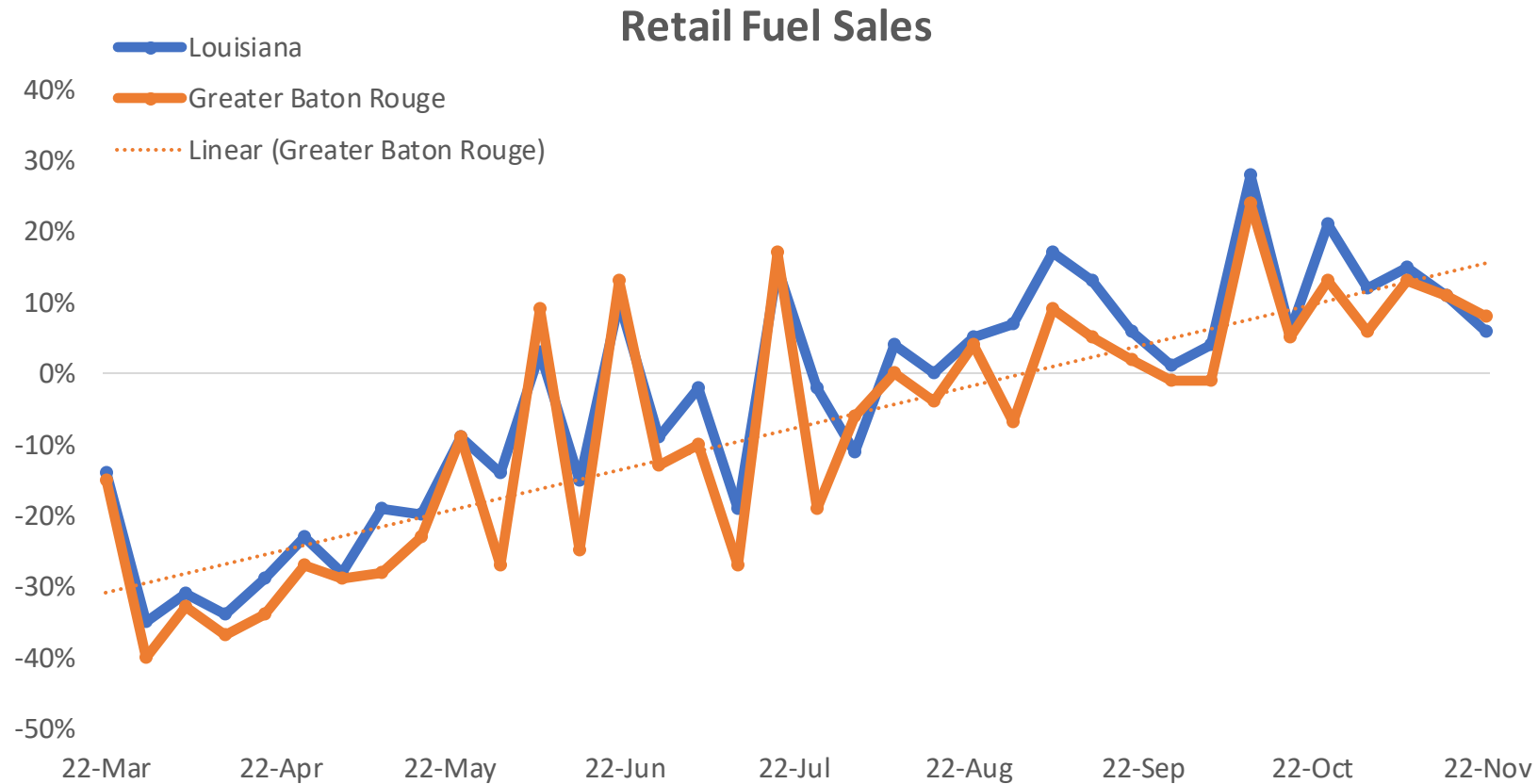
Parish	11-07-2020	11-14-2020	11-21-2020
Ascension	2,153	2,866	2,943
East Baton Rouge	10,496	15,002	14,321
East Feliciana	314	348	344
Iberville	792	863	883
Livingston	2,038	2,514	2,422
Point Coupee	164	621	655
St. Helena	227	206	235
West Baton Rouge	622	672	631
West Feliciana	148	186	344
<b>BR MSA total</b>	<b>16,954</b>	<b>23,278</b>	<b>22,778</b>

- Unemployment claims dropped slightly despite initial claims rising for the second consecutive week.
- The Louisiana Workforce Commission issued a press release last week explaining the increase is due to a high number of fraudulent claims across the state, so it's unclear whether more Capital Region residents are actually unemployed than several weeks ago.

Sources: Louisiana Workforce Commission, BRAC Analysis.  
 Dates signify initial plus continued claims for week ending on that day.

# Capital Region COVID-19 Indicator Dashboard

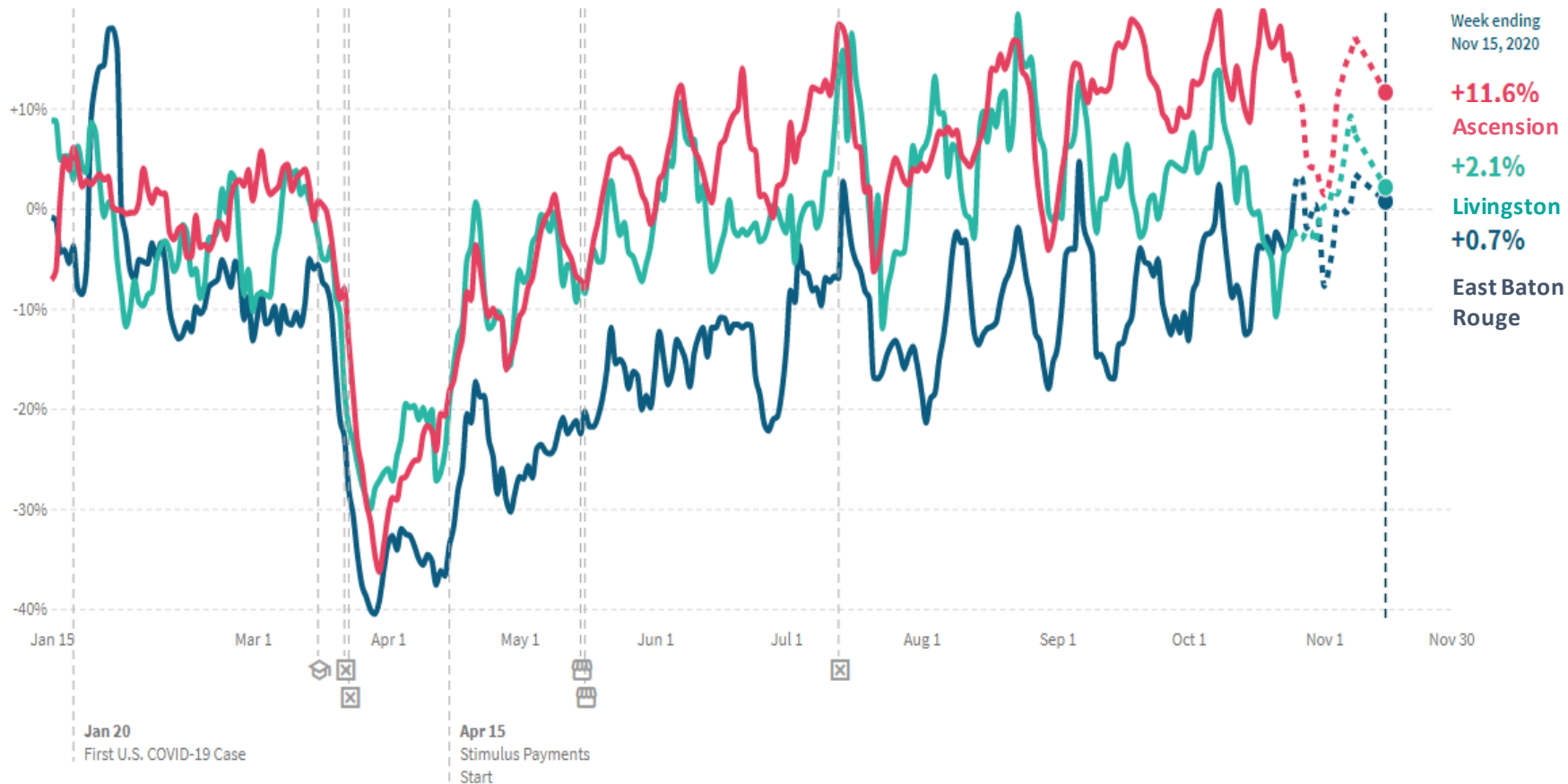
Retail fuel sales progression in Louisiana and Greater Baton Rouge during the pandemic.



- Retail fuel sales were higher than 2019 for both the state and region for the seventh consecutive week.
- Even as parts of the Capital Region economy remain closed, regional retail fuel sales have trended at or above 2019 levels for nearly three months.

# Capital Region COVID-19 Indicator Dashboard

How has consumer spending been impacted by the pandemic?



- Spending is above pre-COVID levels in the three largest Capital Region parishes.
- Spending is down in West Baton Rouge (-15.2%) but up in East Feliciana (+11.0%).
- Another round of federal stimulus through enhanced unemployment benefits, a one-time stimulus payment, or more money allocated to PPP would likely increase spending.

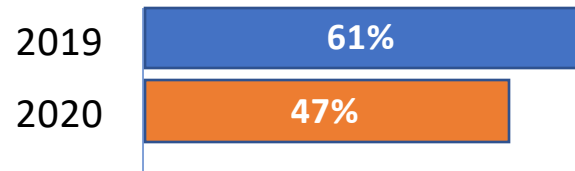
Sources: Opportunity Insights; dotted lines indicate data is preliminary.

# Capital Region COVID-19 Indicator Dashboard

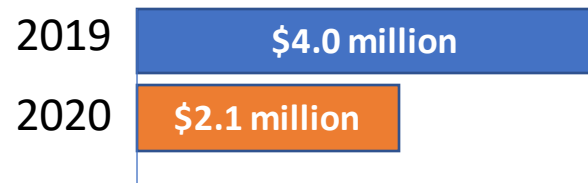
How has travel been impacted during the pandemic?

## Hotel Occupancy

November 15 – November 21



Revenue November 15 – November 21

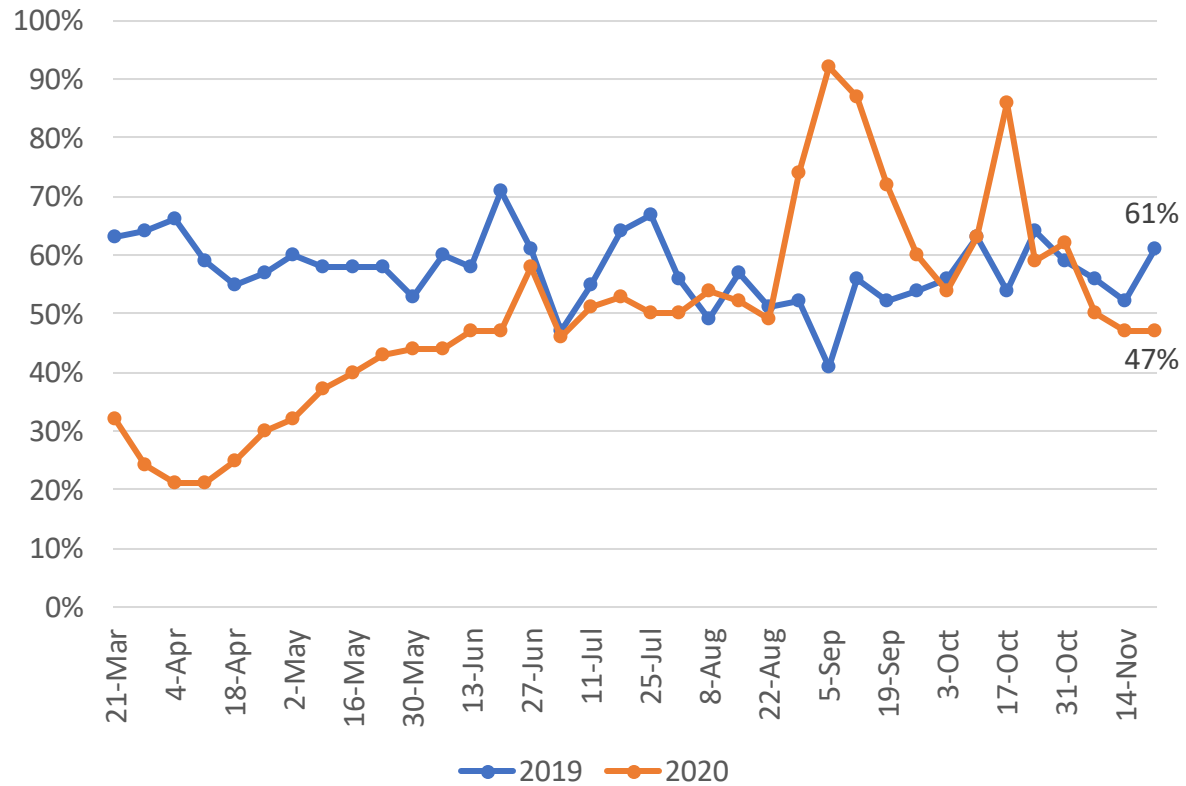


- 2020 occupancy rates were significantly lower than those of 2019 in the last week.
- In addition, revenues were flat over the week, but significantly down over the year.
- A recent national survey of hotel owners found that 67% say they could not survive another six months at current occupancy levels, implying that the uptick over the last month may have been crucial for local hotels.

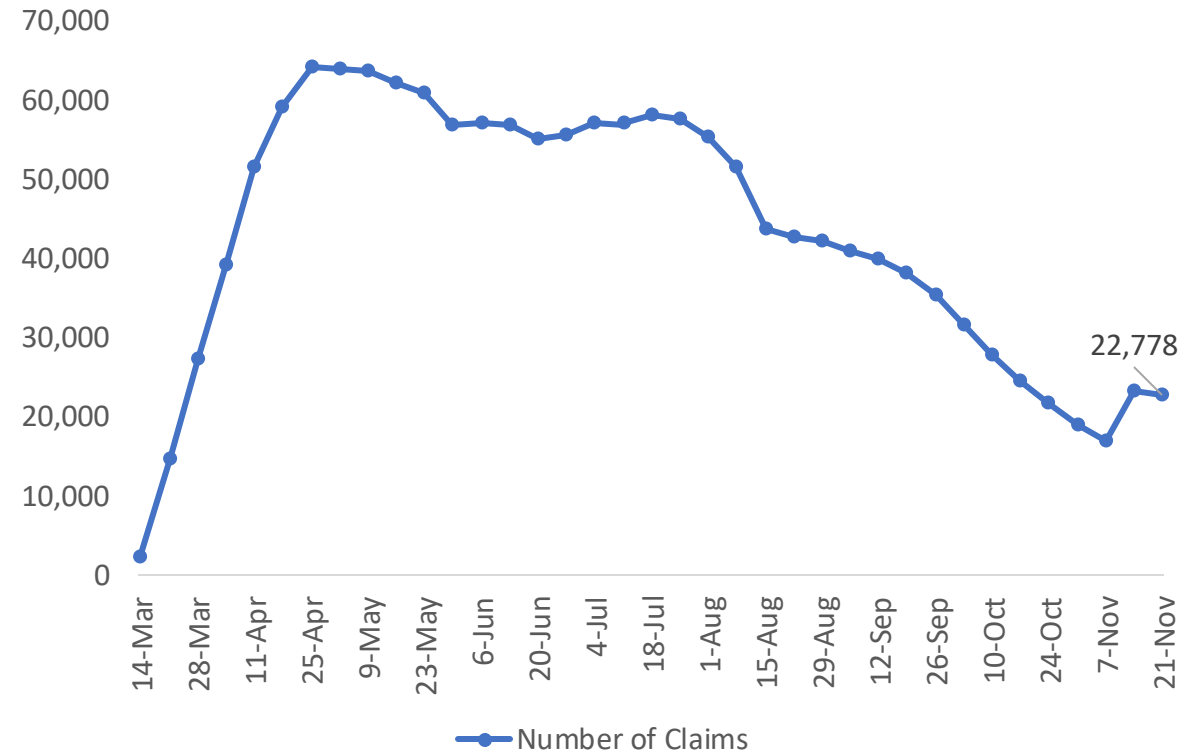
# Capital Region COVID-19 Indicator Dashboard

Both hotel occupancy and unemployment claims have shown marked improvement from the height of the pandemic.

## Hotel Occupancy



## Weekly Combined UI Claims



# Capital Region COVID-19 Indicator Dashboard

How has travel been impacted during the pandemic?

## CATS Transportation Ridership

Week Ending	2019 Ridership	2020 Ridership	%age Change
April 25th	46,838	15,846	-66.2%
May 30th	47,289	21,115	-55.3%
June 20th	46,730	23,944	-48.8%
July 4th	46,773	22,558	-51.8%
August 15th	50,714	25,192	-50.3%
September 12th	53,930	23,503	-56.4%
October 17th	47,187	26,998	-42.8%
November 28th	38,163	13,324	-65.1%

- CATS ridership was down due to Thanksgiving but was still much lower than the same week in 2019.

## Residential Travel

Parish	Retail & Recreation	Grocery and Pharmacy	Parks	Transit Stations	Workplace	Residential
Ascension	-16%	-25%	-	-	-61%	+19%
East Baton Rouge	-36%	-29%	-50%	-44%	-60%	+21%
East Feliciana	-	-	-	-	-60%	-
Iberville	-45%	-38%	-	-58%	-61%	+21%
Livingston	-11%	-12%	-23%	-37%	-60%	+18%
Point Coupee	-	-	-	-	-52%	-
St. Helena	-	-	-	-	-47%	-
West Baton Rouge	-42%	-26%	-	-38%	-61%	+24%
West Feliciana	-	-	-	-	-60%	-

- Each parish saw a massive drop-off in all mobility and uptick in people staying at home due to the Thanksgiving holiday.

Source: Google Mobility Change Report, November 27th, 2020;  
Capital Area Transit System.