

COVID-19 Indicator Dashboard

December 22, 2020

Lead Researcher:
Andrew Fitzgerald



Baton Rouge Area Chamber®

Capital Region COVID-19 Indicator Dashboard

How has unemployment been impacted during the pandemic?

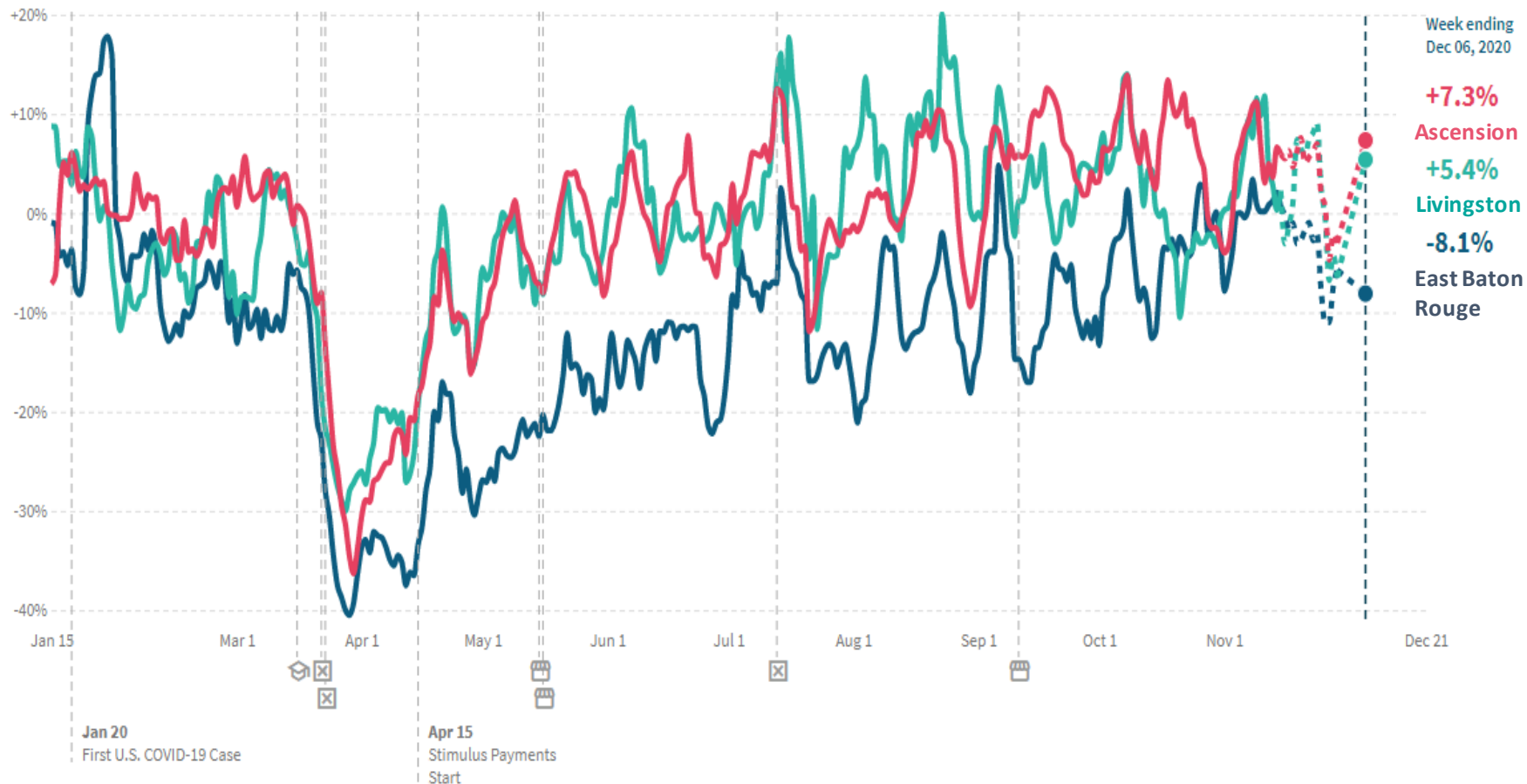
Parish	11-28-2020	12-5-2020	12-12-2020
Ascension	1,754	1,698	1,568
East Baton Rouge	8,307	7,505	7,039
East Feliciana	246	234	215
Iberville	683	598	566
Livingston	1,617	1,582	1,464
Point Coupee	366	354	321
St. Helena	178	152	147
West Baton Rouge	492	464	443
West Feliciana	122	121	215
BR MSA total	13,765	12,708	11,978

- Unemployment claims fell again, setting another low point since before the governor’s stay-at-home order.
- While there was seemingly a spike in claims several weeks ago, the federal Department of Labor has since advised that those number be disregarded for now because of a high likelihood that it was coordinated fraud.

Sources: Louisiana Workforce Commission, BRAC Analysis.
 Dates signify initial plus continued claims for week ending on that day.

Capital Region COVID-19 Indicator Dashboard

How has consumer spending been impacted by the pandemic?



- While spending is well above pre-COVID levels in Ascension and Livingston, it is down in EBR.
- The downward trend in the largest parish in the region is especially troubling because the holiday season usually sees increased spending.
- The news of a new federal stimulus that includes direct payments to individuals and enhanced unemployment benefits is likely to spur more spending.

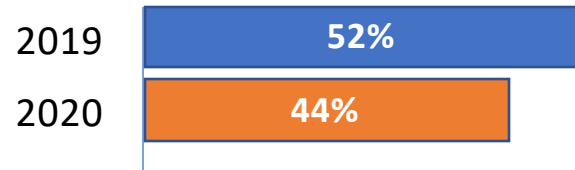
Sources: Opportunity Insights; dotted lines indicate data is preliminary.

Capital Region COVID-19 Indicator Dashboard

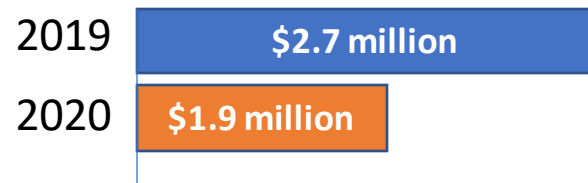
How has travel been impacted during the pandemic?

Hotel Occupancy

December 6 – December 12



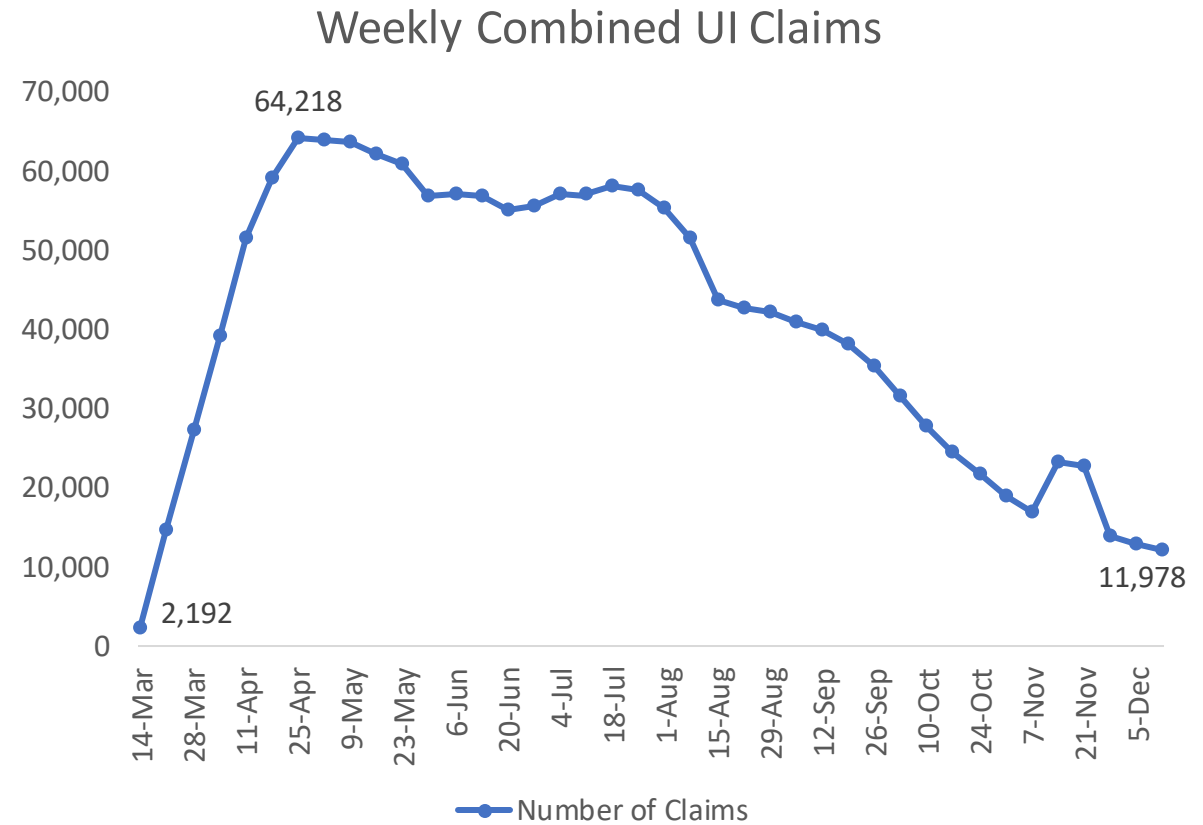
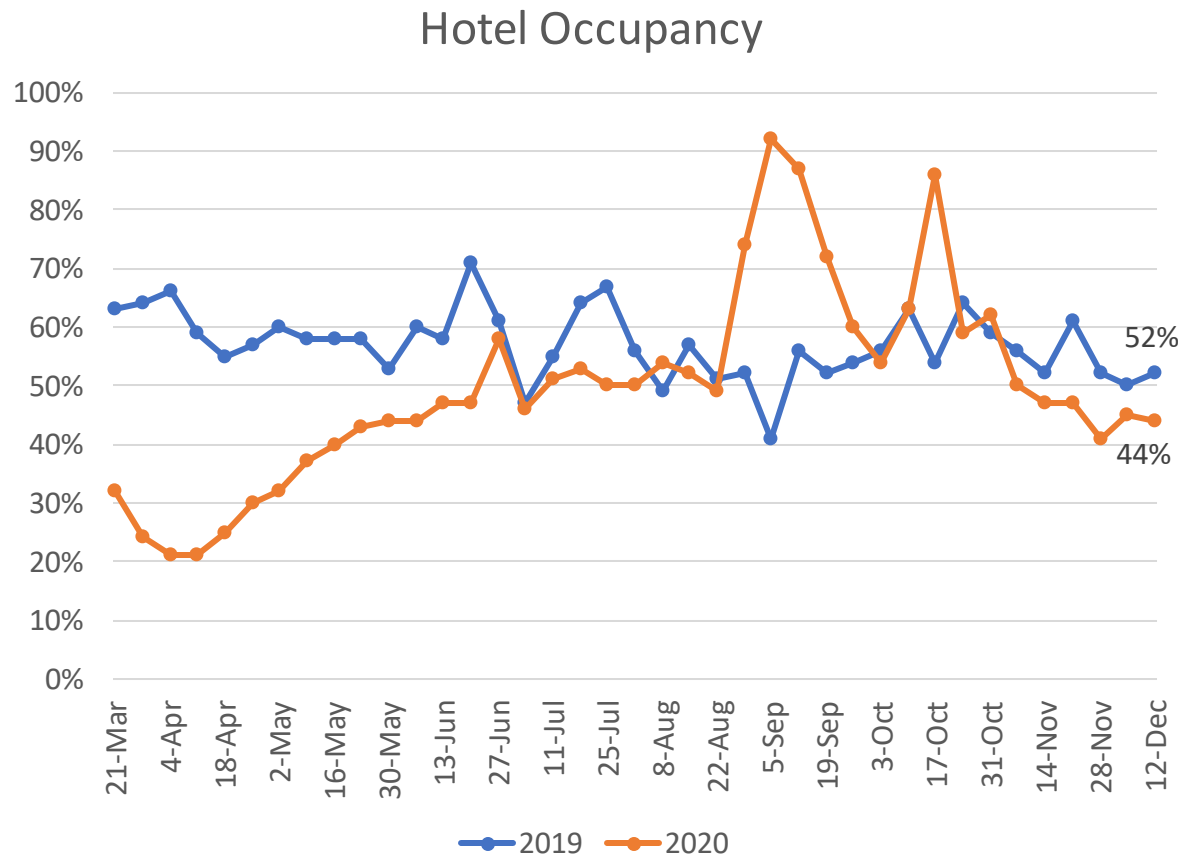
Revenue December 6 – December 12



- 2020 occupancy rates were slightly lower than those of 2019, and down over-the-week as well.
- In addition, revenues were down over both the week and year.
- A recent national survey of hotel owners found that 67% say they could not survive another six months at current occupancy levels, highlighting the peril this and other travel-based industries are in until vaccines are widely distributed.

Capital Region COVID-19 Indicator Dashboard

While hotel occupancy has had some disappointing weeks lately, unemployment claims are at their lowest point since before the pandemic.



Capital Region COVID-19 Indicator Dashboard

How has travel been impacted during the pandemic?

CATS Transportation Ridership

Week Ending	2019 Ridership	2020 Ridership	%age Change
April 25th	46,838	15,846	-66.2%
May 30th	47,289	21,115	-55.3%
June 20th	46,730	23,944	-48.8%
July 4th	46,773	22,558	-51.8%
August 15th	50,714	25,192	-50.3%
September 12th	53,930	23,503	-56.4%
November 28th	38,163	13,324	-65.1%
December 19th	45,969	21,841	-52.5

- CATS ridership was up over-the-week but still down significantly from 2019.

Residential Travel

Parish	Retail & Recreation	Grocery and Pharmacy	Parks	Transit Stations	Workplace	Residential
Ascension	-3%	+4%	-	-	-17%	+8%
East Baton Rouge	-17%	-7%	-45%	-34%	-28%	+9%
East Feliciana	-	-	-	-	-15%	-
Iberville	-45%	-7%	-	-10%	-23%	+6%
Livingston	+2%	+8%	-12%	-3%	-13%	+6%
Point Coupee	-	-	-	-	-21%	-
St. Helena	-	-	-	-	-18%	-
West Baton Rouge	-5%	0%	-	-3%	-20%	+7%
West Feliciana	-	-	-	-	-27%	-

- Nearly all parishes saw increased travel to Retail & Recreation sites over the week.

Source: Google Mobility Change Report, December 15th, 2020;
Capital Area Transit System.