

COVID-19 Indicator Dashboard

May 13, 2021

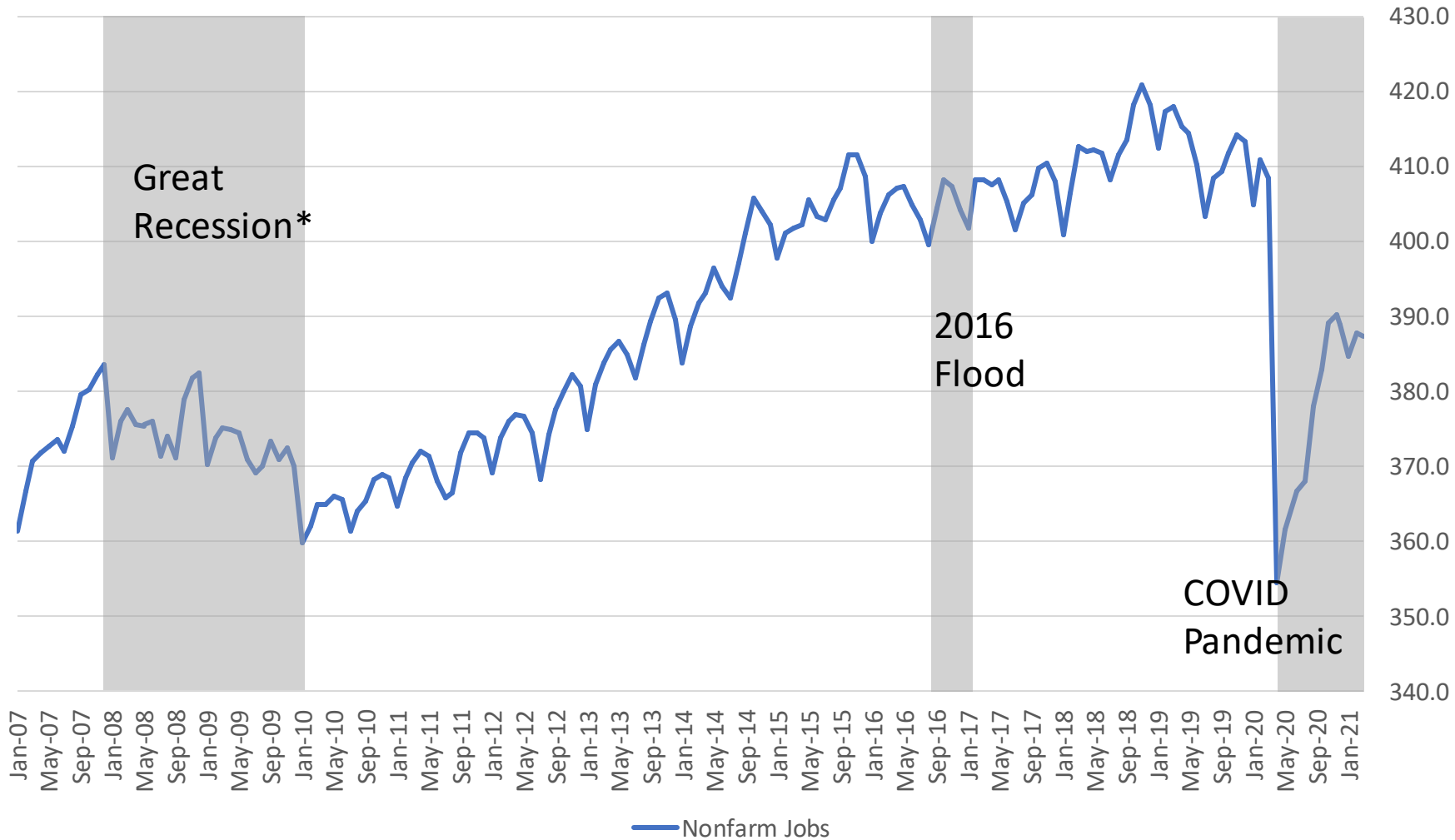
Lead Researcher:
Andrew Fitzgerald



Baton Rouge Area Chamber®

Capital Region COVID-19 Indicator Dashboard

The region lost 300 jobs in March, remaining stagnant from jobs gained the previous month.



Major BR MSA Job Losses

- Great Recession* (12/07 – 1/10): -6.2%
- 2016 Flood (8/16): -1.0%
 - Led to lower job count in high-employment times like holidays
- 2020 Covid-19 Pandemic (3/20 – 3/21): -5.1%
 - -13.2% in April, at the lowest point for nonfarm jobs

Source: BLS, LWC, BRAC Analysis.

*Technical dates of the recession are 12/2007 to 6/2009, but greatest negative job effects felt in Baton Rouge metro area in 1/2010

Capital Region COVID-19 Indicator Dashboard

Leisure & Hospitality jobs are starting to return, while other industries stagnate.

Major industries in the Capital Region

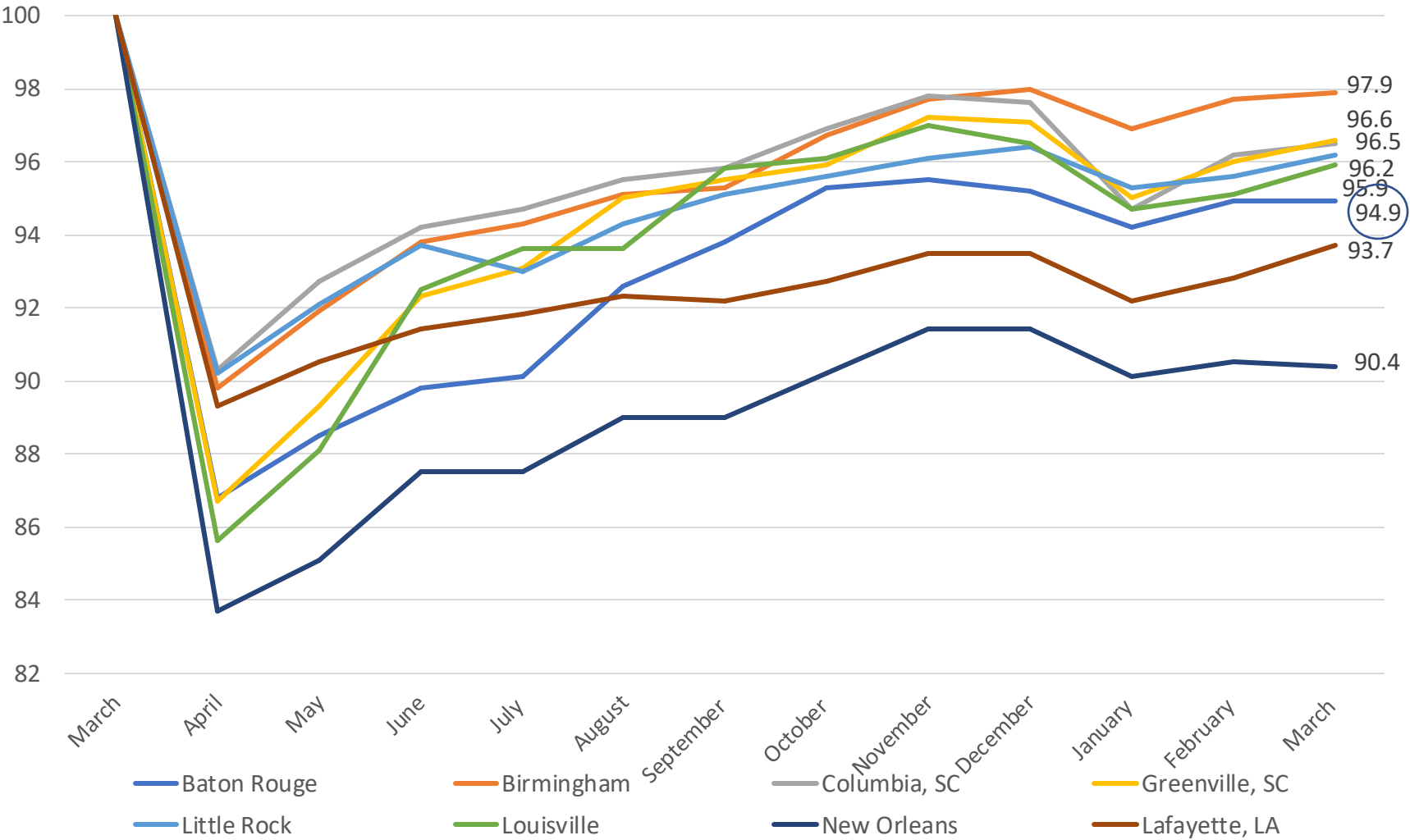
Industry	COVID Job Loss	%age Lost
Construction	-5,900	-12.4%
Professional Services	-3,600	-7.2%
Education & Healthcare	-3,000	-5.5%
Leisure & Hospitality	-2,400	-6.25%
Trade, Transportation & Utilities	-1,200	-1.7%
Manufacturing	-1,000	-3.3%
Government	-100	-0.1%

- Most industries showed flat growth over-the-month, but some saw significant movement. The largest movers were Leisure & Hospitality (+1,200), Transportation & Utilities (-800), and Professional Services (-700).
- The Leisure & Hospitality Sector saw improvements as the state began operating under Phase 3 restrictions. Given the recent relaxation of restrictions, these jobs should continue to see improvements.
- Construction is now the hardest-hit industry both in number of jobs lost and percentage still gone. Job recovery overall will stagnate until industrial construction picks back up.

Capital Region COVID-19 Indicator Dashboard

Major revisions by the Bureau of Labor Statistics indicate Baton Rouge is in line with peer metros and ahead of in-state metros regarding job recovery.

Metro Area Employment Index



Source: BLS, BRAC Analysis.

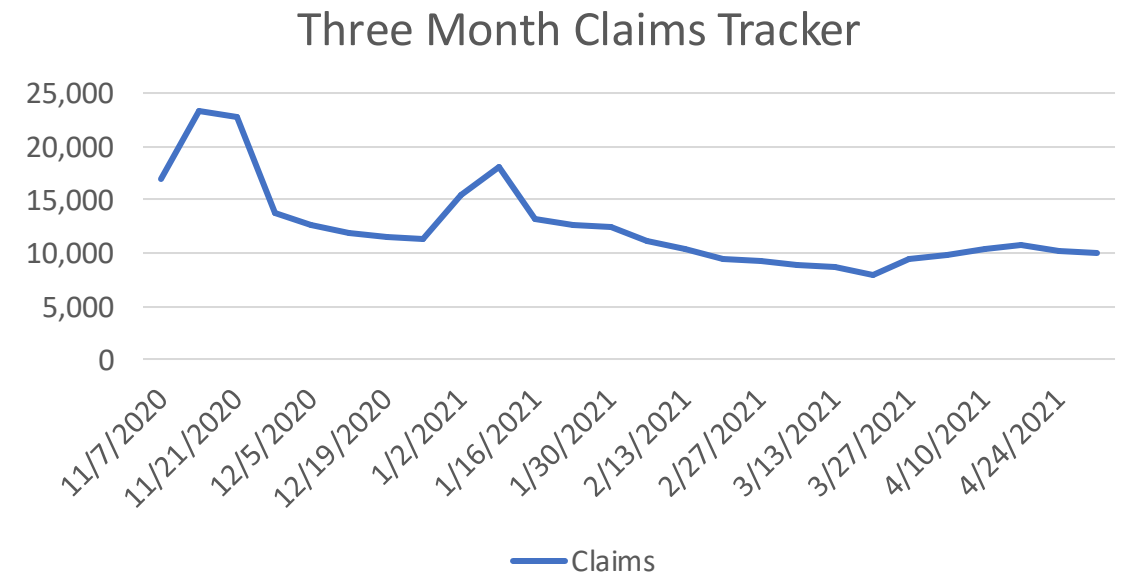
- The Baton Rouge MSA has recovered at a similar pace as many out-of-state peer metros.
- From February to March, the metro area saw no change in job recovery.
- Job numbers for April and May, in which the region loosened restrictions, will provide a better understanding of the state of the job market free of COVID restrictions.

Capital Region COVID-19 Indicator Dashboard

Unemployment claims have decreased for the last two weeks, after a four-week gradual increase across the MSA.

Parish	4-17-2021	4-24-2021	5-1-2021
Ascension	1,348	1,362	1,281
East Baton Rouge	6,424	6,141	6,175
East Feliciana	187	182	180
Iberville	504	487	521
Livingston	1,326	1,184	1,171
Point Coupee	274	261	270
St. Helena	152	136	135
West Baton Rouge	361	349	362
West Feliciana	110	90	92
BR MSA total	10,686	10,192	10,187

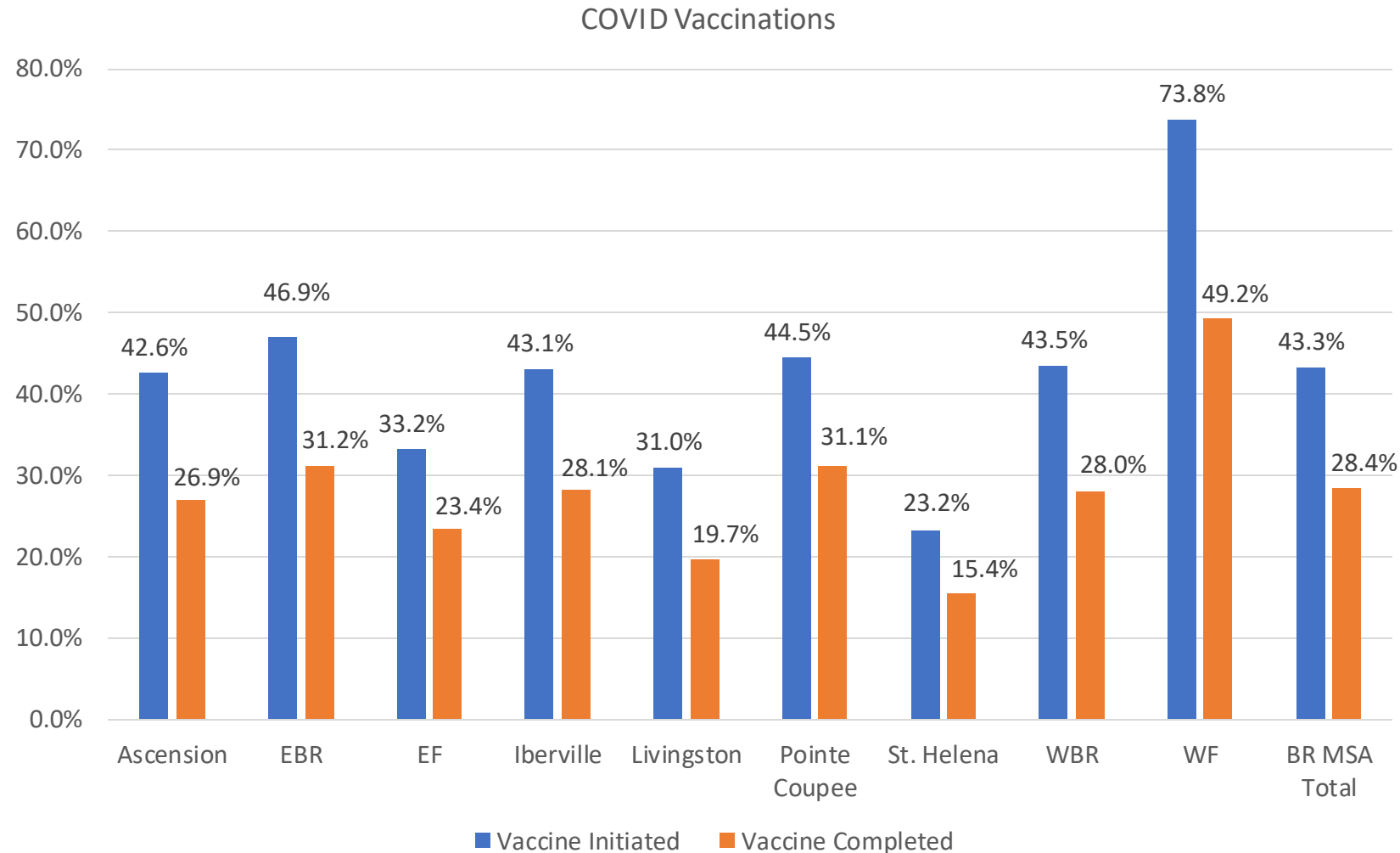
- Since the state is now operating under looser restrictions, unemployment claims should start seeing a continual decrease in claims again.



Sources: Louisiana Workforce Commission, BRAC Analysis.
 Dates signify initial plus continued claims for week ending on that day.

Capital Region COVID-19 Indicator Dashboard

Vaccine uptake varies significantly among Capital Region parishes.



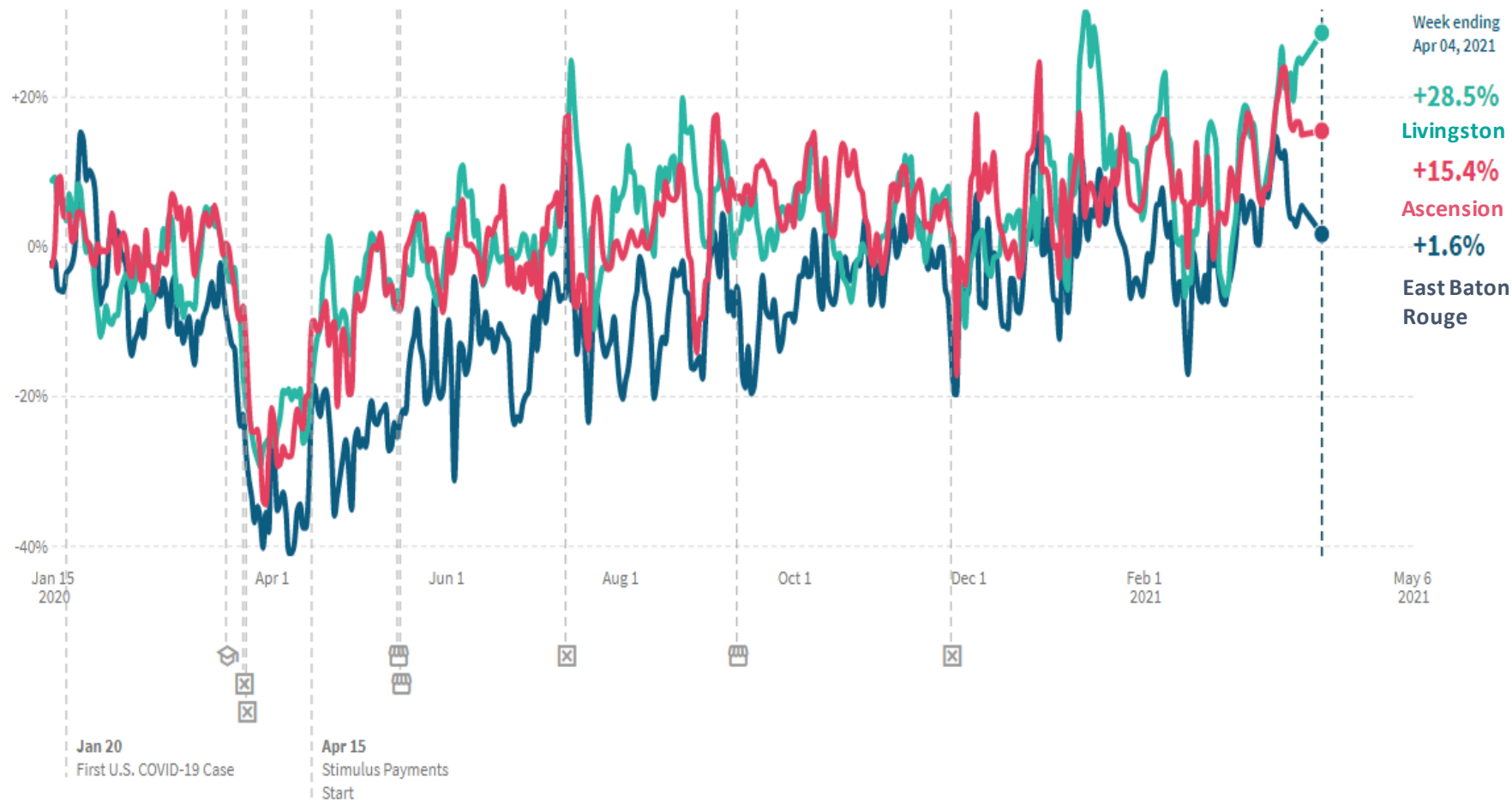
- West Feliciana has initiated vaccines on over 73.8% of its adult population, while St. Helena is lagging with 23.2%.
- The region's largest parish, EBR, is near the top with 46.9% vaccine initiation. Since over half the region's residential population is in the parish, this is key to track.
- Because of the high level of cross-parish commuting for work – half of those employed in EBR live outside the parish – it's vital that the entire region commits to working toward herd immunity.

Source: Louisiana Department of Health, through 5/6/21.

Note: All percentages based on adult population (18+).

Capital Region COVID-19 Indicator Dashboard

How has consumer spending been impacted by the pandemic?



- As of early April, consumer spending was above pre-pandemic levels for each of the region's three largest parishes.
- This spending reflects both pent up demand and the strong state of household income as COVID restrictions were lifted in the state.

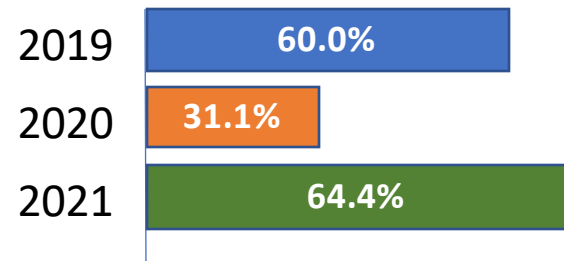
Source: Opportunity Insights, measures spending compared to January 2020.

Capital Region COVID-19 Indicator Dashboard

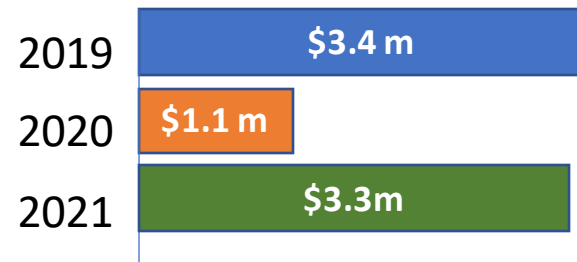
How has travel been impacted during the pandemic?

Hotel Occupancy

April 25 – May 1



Revenue April 25 – May 1



- The 2021 hotel occupancy rates are over twice as high as occupancy rates in 2020 and higher than rates in 2019, indicating that the hospitality and tourism industry is recovering.
- Revenues are up drastically over-the-year and virtually identical to revenues from 2019.
- With entertainment and sporting events returning with increased capacity, the hotel industry should continue to see pre-pandemic occupancy and revenue rates.

Capital Region COVID-19 Indicator Dashboard

How has travel been impacted during the pandemic?

CATS Transportation Ridership

Week Ending	2019-2020 Ridership	2020-2021 Ridership	%age Change
April 25th	46,838	15,846	-66.2%
June 20th	46,730	23,944	-48.8%
August 15th	50,714	25,192	-50.3%
October 17th	47,187	26,998	-42.8%
December 19th	45,969	21,841	-52.5%
February 27th	44,433	24,641	-44.5%
March 27th	19,265	20,017	3.9%
April 24th	15,846	20,928	31.1%
May 1st	18,080	21,315	17.9%

- Ridership was up over-the-year, but still significantly down compared to pre-pandemic numbers.

Residential Travel

Parish	Retail & Recreation	Grocery & Pharmacy	Parks	Transit Stations	Workplace	Residential
Ascension	2%	6%	-	-	-6%	-1%
East Baton Rouge	-11%	0%	-7%	-9%	-17%	1%
East Feliciana	-	-	-	-	-14%	-
Iberville	-	-10%	-	5%	-20%	3%
Livingston	3%	12%	29%	23%	-7%	-1%
Point Coupee	-	-	-	-	-15%	-
St. Helena	-	-	-	-	-13%	-
West Baton Rouge	13%	3%	-	16%	-13%	4%
West Feliciana	-	-	-	-	-26%	-

- Travel to work has varied across the parishes but is similar to pre-pandemic numbers.

Source: Google Mobility Change Report, May 1, 2021; Capital Area Transit System.