

COVID-19 Indicator Dashboard

June 10, 2021

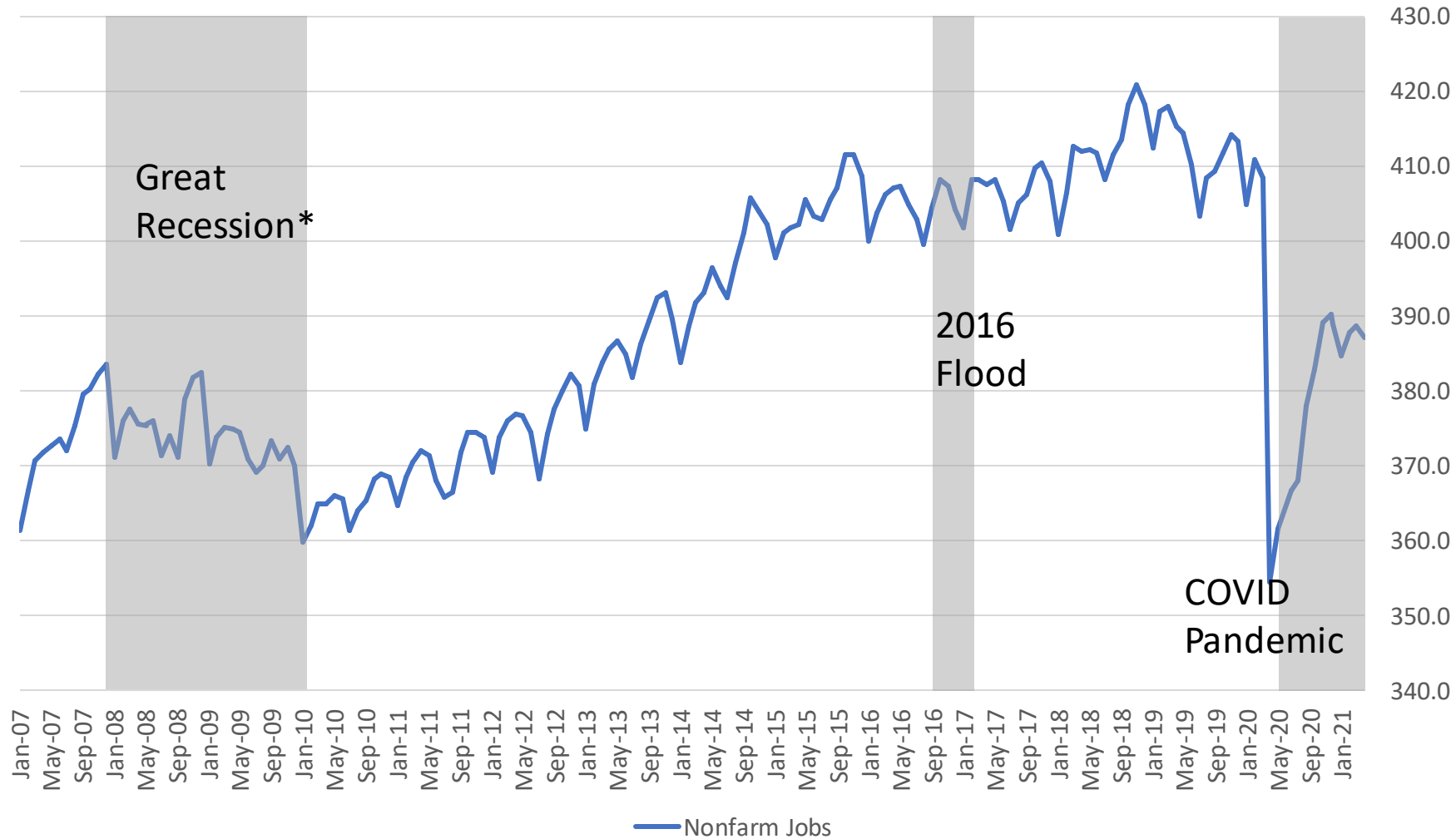
Lead Researchers:
Andrew Fitzgerald and Jade Sumrall



Baton Rouge Area Chamber®

Capital Region COVID-19 Indicator Dashboard

The region lost 1,500 jobs in April, signaling that the region's previously rapid recovery has stalled.



Major BR MSA Job Losses

- Great Recession* (12/07 – 1/10): -6.2%
- 2016 Flood (8/16): -1.0%
 - Led to lower job count in high-employment times like holidays
- 2020 Covid-19 Pandemic (3/20 – 4/21): -5.2%
 - -13.2% in April 2020, at the lowest point for nonfarm jobs

Source: BLS, LWC, BRAC Analysis.

*Technical dates of the recession are 12/2007 to 6/2009, but greatest negative job effects felt in Baton Rouge metro area in 1/2010

Capital Region COVID-19 Indicator Dashboard

Construction jobs still show major pandemic-related losses, while other industries stagnate.

Major industries in the Capital Region

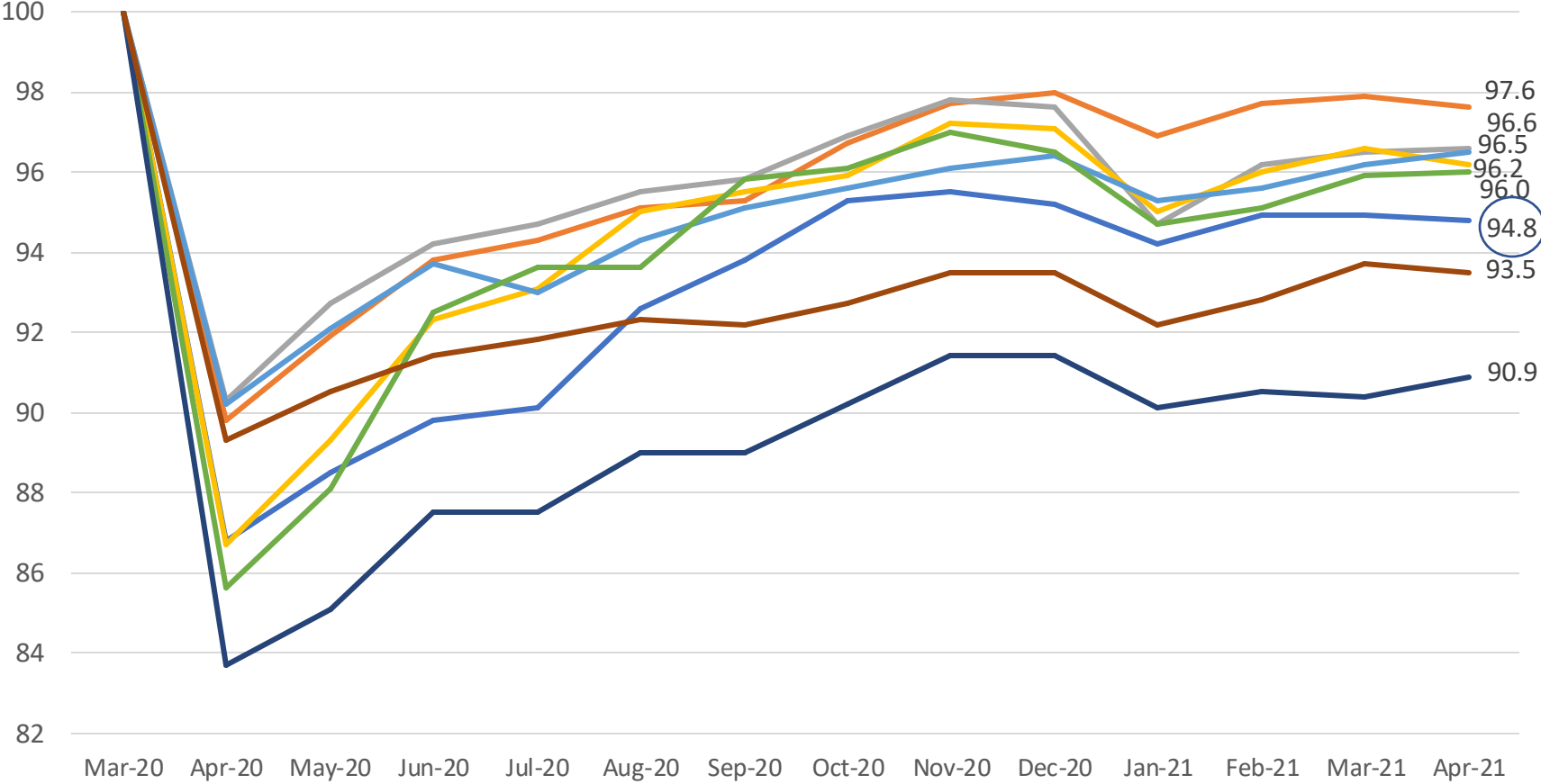
Industry	COVID Job Loss	%age Lost
Construction	-5,900	-12.4%
Professional Services	-3,200	-6.4%
Education & Healthcare	-3,000	-5.5%
Leisure & Hospitality	-2,700	-7.0%
Trade, Transportation & Utilities	-1,600	-2.3%
Manufacturing	-1,000	-3.3%
Government	-100	-0.1%

- Most industries showed flat growth over-the-month, but some saw significant movement. The largest movers were Professional Services (+400), Trade, Transportation & Utilities (-400), and Leisure and Hospitality (-300).
- The Leisure & Hospitality Sector gained 1,200 jobs last month but lost 300 this month. Given the recent relaxation of restrictions, these jobs should be rising rather than falling.
- Construction is still the hardest-hit industry both in number of jobs lost and percentage still gone. Job recovery overall will stagnate until industrial construction picks back up.

Capital Region COVID-19 Indicator Dashboard

As job recovery in out-of-state peer metros continues apace, it has stalled in Louisiana's biggest metros.

Metro Area Employment Index



- The Baton Rouge MSA has recovered at a rate somewhat below that of out-of-state peer metros.
- From March to April, the metro area saw no real change in job recovery.
- The three largest metros have all struggled to regain jobs in recent months despite virtually all restrictions being lifted and positivity rates being consistently low.

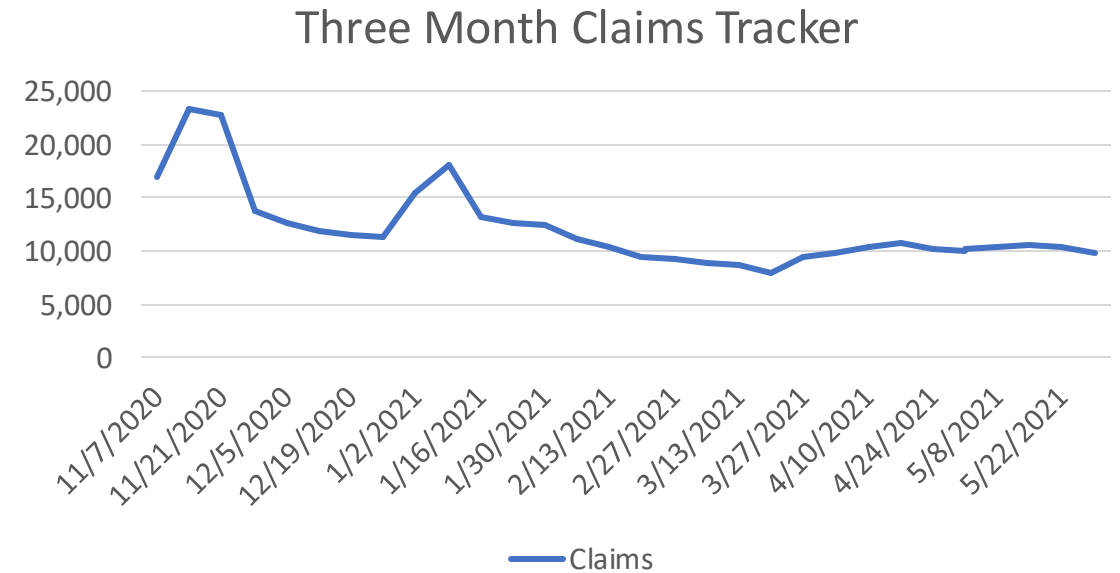
Source: BLS, BRAC Analysis.

Capital Region COVID-19 Indicator Dashboard

Unemployment claims have decreased for the last three weeks for the MSA.

Parish	5-15-2021	5-22-2021	5-29-2021
Ascension	1,334	1,304	1,188
East Baton Rouge	6,485	6,473	6,093
East Feliciana	181	177	169
Iberville	481	487	478
Livingston	1,144	1,129	1,068
Point Coupee	297	284	283
St. Helena	148	157	139
West Baton Rouge	354	363	324
West Feliciana	95	95	85
BR MSA total	10,519	10,469	9,827

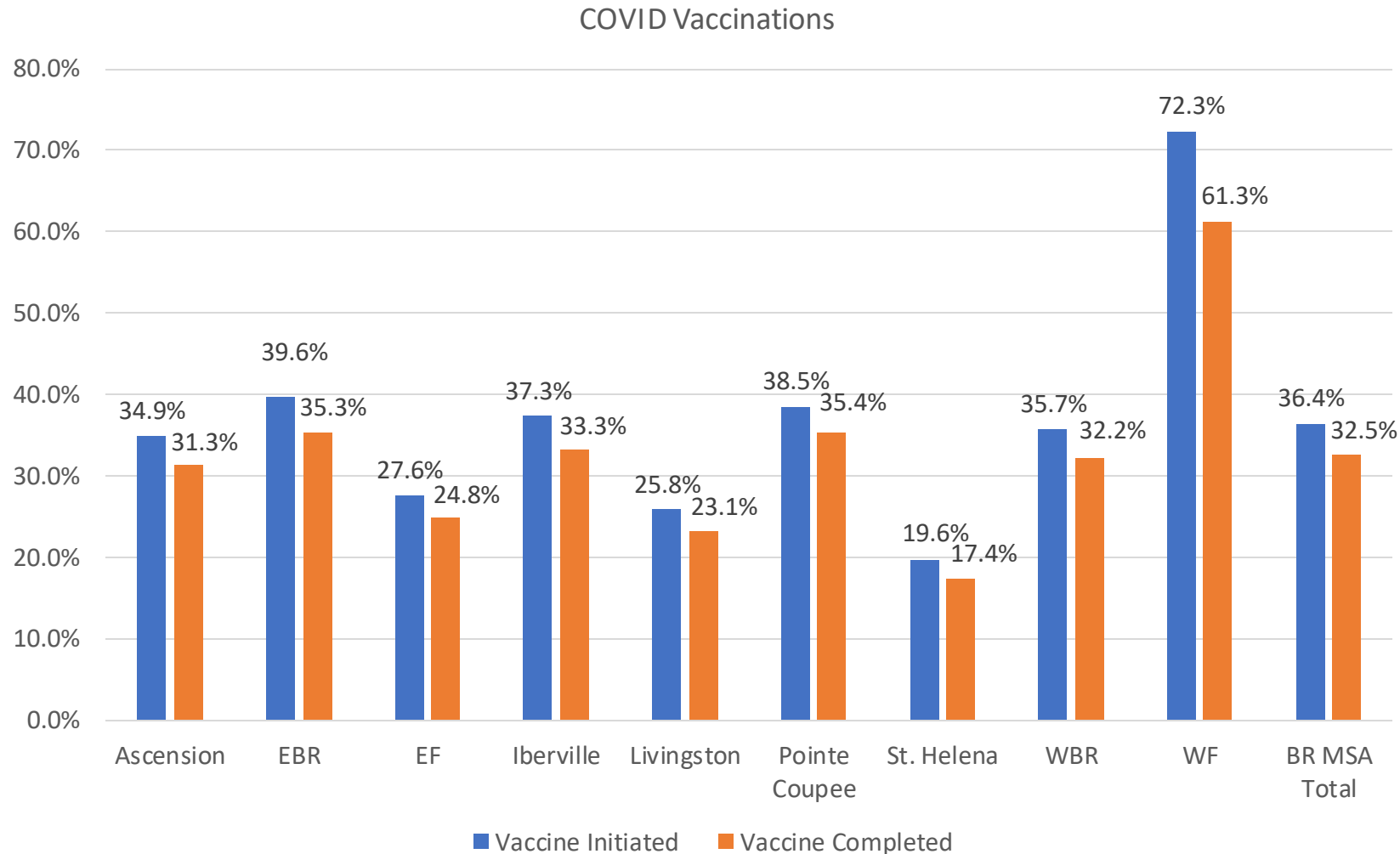
- Weekly unemployment claims continue to stagnate at a high level despite more than 33,000 job openings in the region, with a median posted wage rate of \$22 an hour.



Sources: Louisiana Workforce Commission, BRAC Analysis.
 Dates signify initial plus continued claims for week ending on that day.

Capital Region COVID-19 Indicator Dashboard

Vaccine uptake varies significantly among Capital Region parishes.



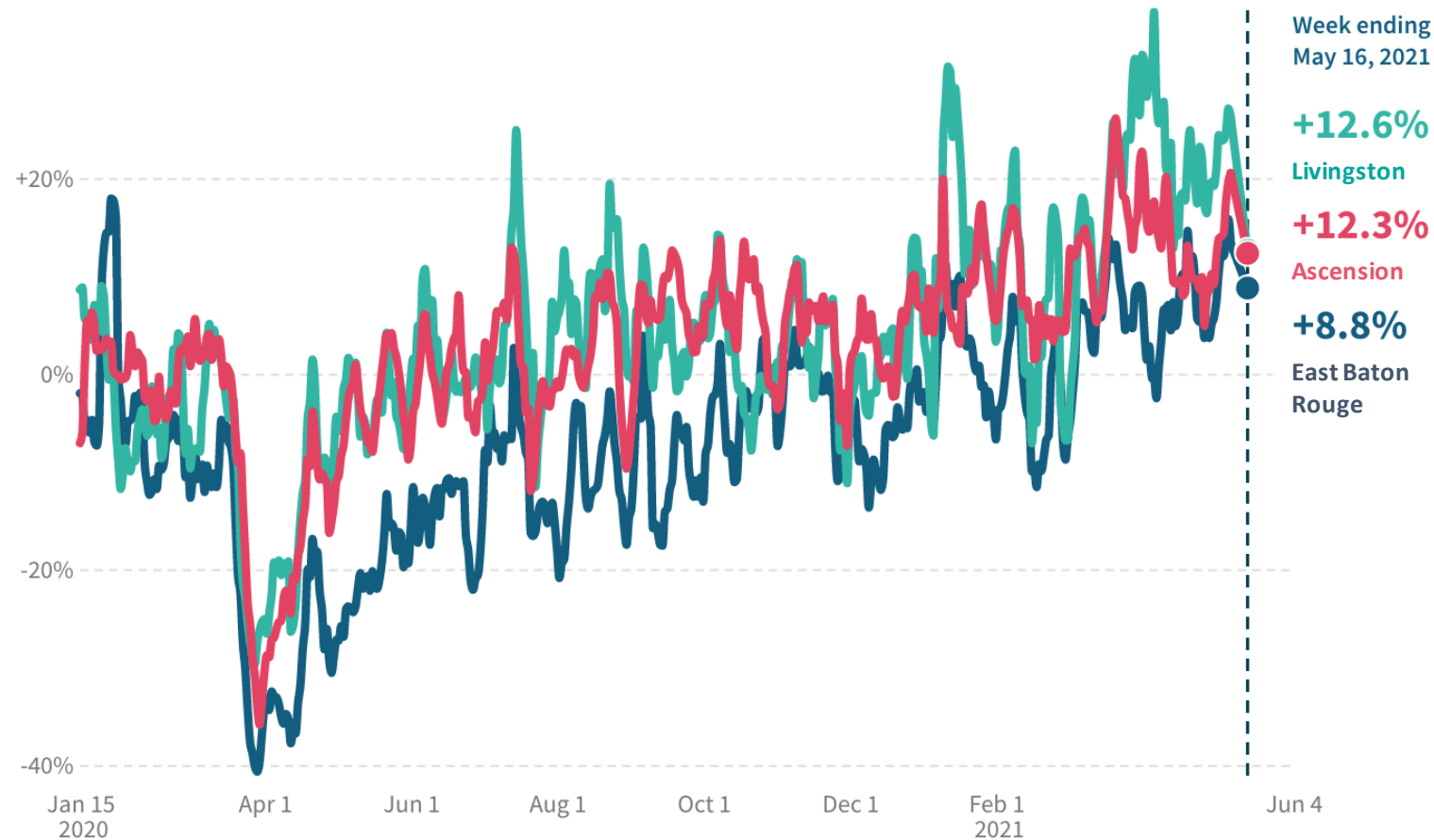
- West Feliciana has initiated vaccines on over 72.3% of its total population, while St. Helena is lagging with 19.6%.
- The region's largest parish, EBR, is near the top with 39.6% vaccine initiation. Since over half the region's residential population is in the parish, this is key to track.
- Because of the high level of cross-parish commuting for work – half of those employed in EBR live outside the parish – it's vital that the entire region commits to working toward herd immunity.

Source: Louisiana Department of Health, through 6/3/21.

Note: All percentages based on total population.

Capital Region COVID-19 Indicator Dashboard

How has consumer spending been impacted by the pandemic?



- Consumer spending remained significantly above pre-pandemic levels in the metro's three largest parishes through mid-May.
- However, unemployment in the Capital remains high at 5.8% - a full 2% higher than the pre-pandemic rate of 3.8%.
- This asymmetry is due at least in part to the federal unemployment enhancement, which has allowed those receiving it to maintain a high median income without seeking employment.

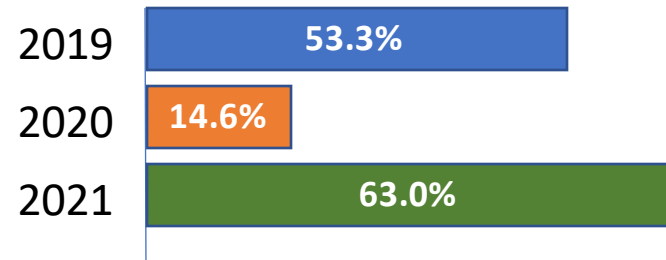
Source: Opportunity Insights, measures spending compared to January 2020.

Capital Region COVID-19 Indicator Dashboard

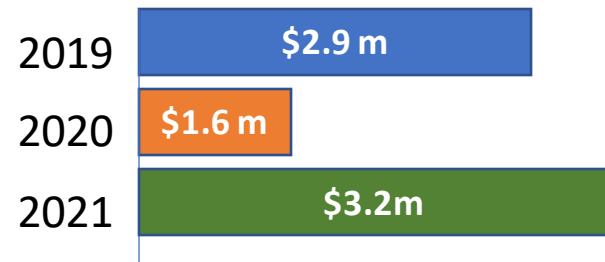
How has travel been impacted during the pandemic?

Hotel Occupancy

May 23 – May 29



Revenue May 23 – May 29



- The 2021 hotel occupancy rates are significantly higher than 2020 rates and even higher than 2019 rates, indicating that the hospitality and tourism industry is recovering.
- Revenues are up drastically over-the-year and even greater than revenues from 2019.
- With entertainment and sporting events returning and more people willing to travel, the hotel industry should continue to see pre-pandemic occupancy and revenue rates.

Capital Region COVID-19 Indicator Dashboard

How has travel been impacted during the pandemic?

CATS Transportation Ridership

Week Ending	2019-2020 Ridership	2020-2021 Ridership	%age Change
April 25th	46,838	15,846	-66.2%
June 20th	46,730	23,944	-48.8%
August 15th	50,714	25,192	-50.3%
October 17th	47,187	26,998	-42.8%
December 19th	45,969	21,841	-52.5%
February 27th	44,433	24,641	-44.5%
April 24th	15,846	20,928	31.1%
May 1st	18,080	21,315	17.9%
May 29th	21,115	21,120	0.02%

- Ridership was virtually identical over-the-year, but still significantly down compared to pre-pandemic numbers.

Residential Travel

Parish	Retail & Recreation	Grocery & Pharmacy	Parks	Transit Stations	Workplace	Residential
Ascension	-0%	3%	-	-	-2%	1%
East Baton Rouge	-15%	-2%	-24%	-32%	-20%	1%
East Feliciana	-	-	-	-	-21%	-
Iberville	-	1%	-	22%	-28%	4%
Livingston	-4%	15%	13%	33%	-4%	0%
Point Coupee	-	-	-	-	-9%	-
St. Helena	-	-	-	-	-25%	-
West Baton Rouge	12%	13%	-	30%	-11%	5%
West Feliciana	-	-	-	-	-32%	-

- Travel to work has varied across the parishes but is similar to pre-pandemic numbers.

Source: Google Mobility Change Report, May 29, 2021; Capital Area Transit System.