

# COVID-19 Indicator Dashboard

July 8, 2021

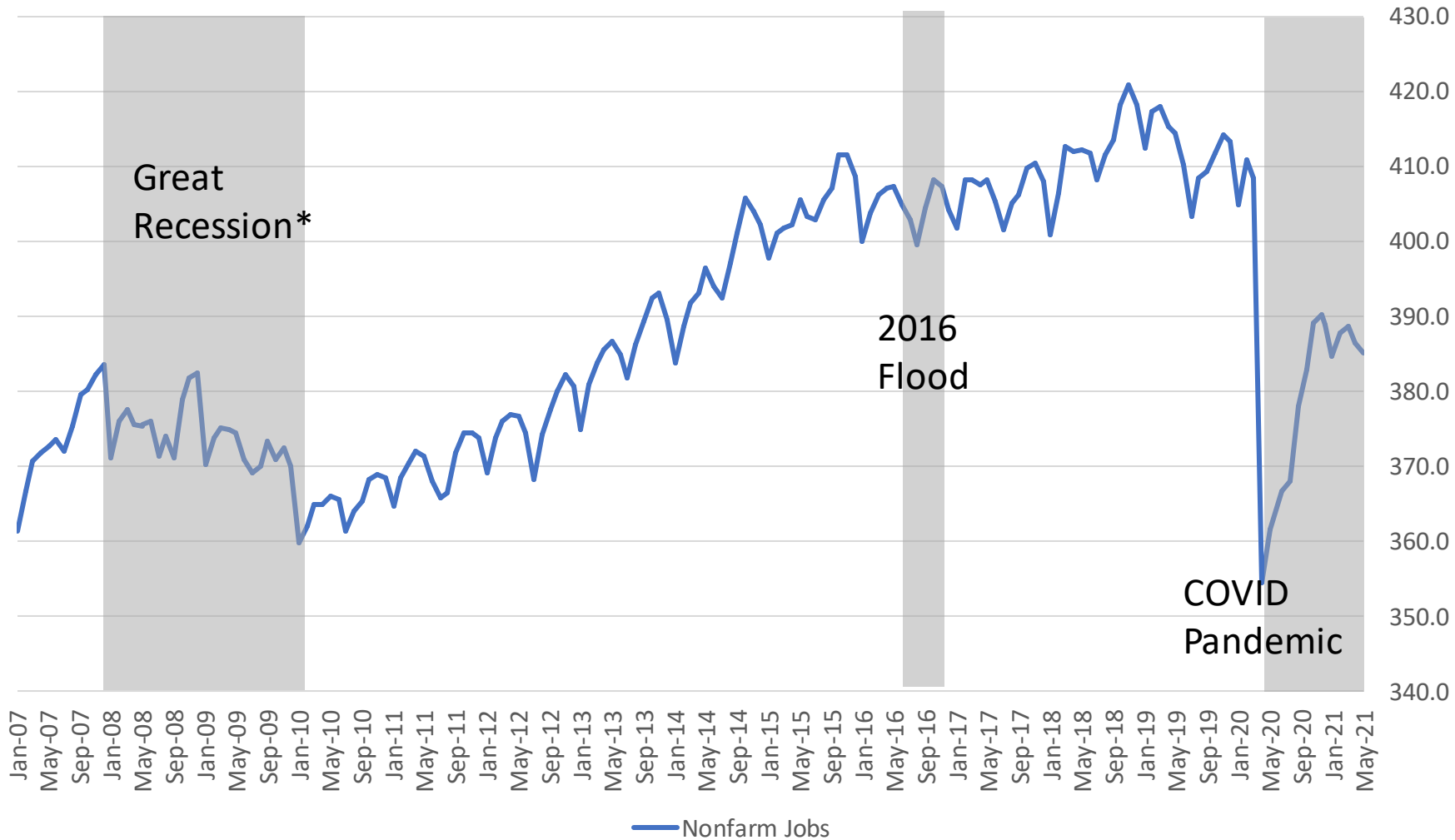
Lead Researchers:  
Andrew Fitzgerald and Jade Sumrall



Baton Rouge Area Chamber®

# Capital Region COVID-19 Indicator Dashboard

The region lost 1,400 jobs in May, indicating that the region's previously rapid recovery has stalled.



## Major BR MSA Job Losses

- Great Recession\* (12/07 – 1/10): -6.2%
- 2016 Flood (8/16): -1.0%
  - Led to lower job count in high-employment times like holidays
- 2020 Covid-19 Pandemic (3/20 – 5/21): -5.7%
  - -13.2% in April 2020, at the lowest point for nonfarm jobs

Source: BLS, LWC, BRAC Analysis.

\*Technical dates of the recession are 12/2007 to 6/2009, but greatest negative job effects felt in Baton Rouge metro area in 1/2010

# Capital Region COVID-19 Indicator Dashboard

The construction industry still shows the greatest amount of pandemic-related job loss, while other industries stagnate across the region.

Major industries in the Capital Region

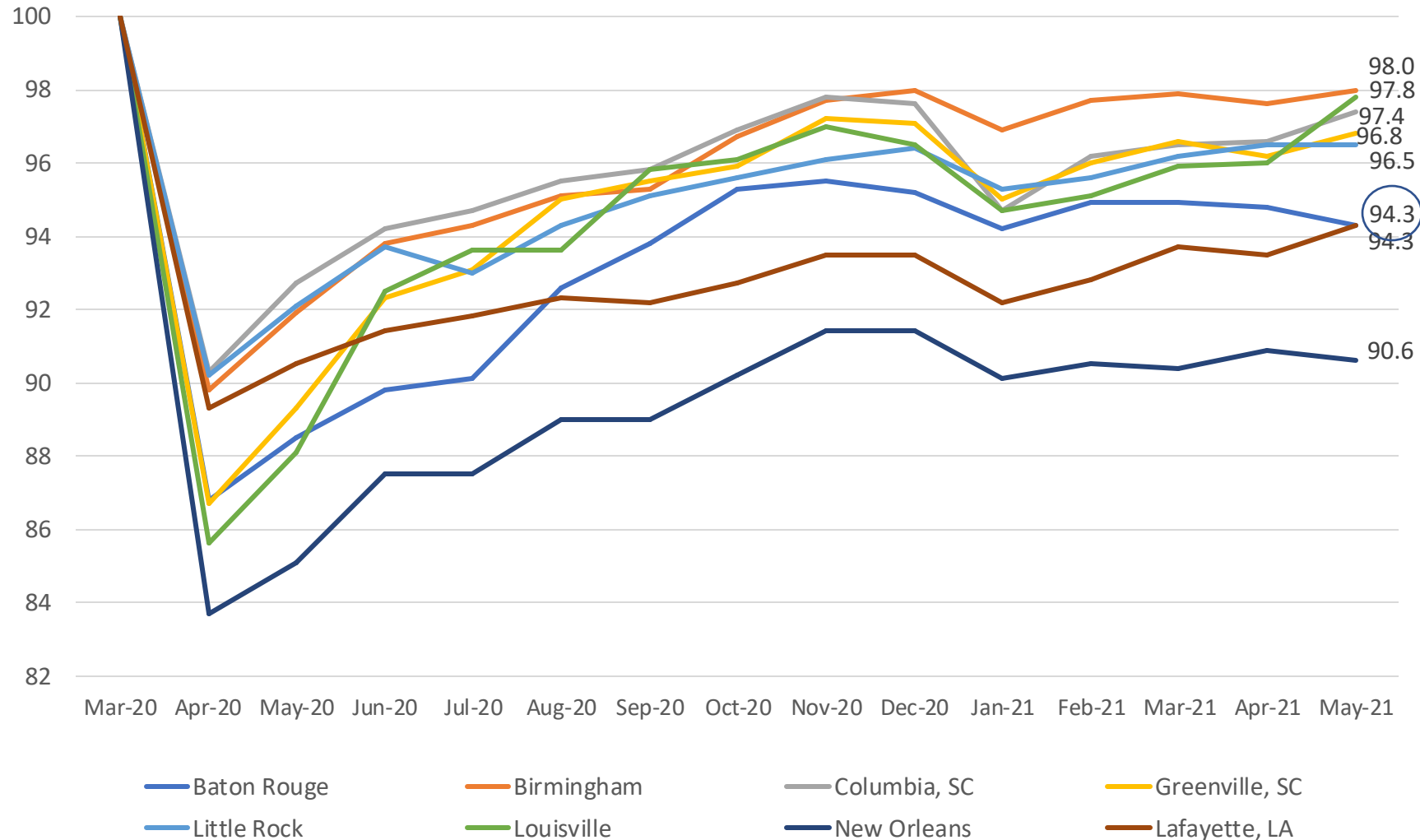
Industry	COVID Job Loss	%age Lost
Construction	-6,900	-14.5%
Professional Services	-3,200	-6.4%
Education & Healthcare	-3,100	-5.7%
Leisure & Hospitality	-2,300	-6.0%
Trade, Transportation & Utilities	-2,200	-3.2%
Manufacturing	-1,100	-3.7%
Government	-600	-0.8%

- Most industries showed flat growth over-the-month, but some saw significant movement. The largest movers were Construction (-900), Professional Services (-500), and Leisure and Hospitality (+800).
- The Construction industry remains the hardest-hit sector with the greatest job loss and percentage still gone. The industry lost an additional 1,000 jobs this month and is down nearly 7,000 jobs since the start of the pandemic.
- The Leisure & Hospitality Sector gained 800 jobs this month. Given the reopening of the economy and cessation of enhanced UI benefits, these jobs should continue to rise.

# Capital Region COVID-19 Indicator Dashboard

Louisiana's largest metros are lagging behind in job recovery compared to out-of-state peer metros.

## Metro Area Employment Index



Source: BLS, BRAC Analysis.

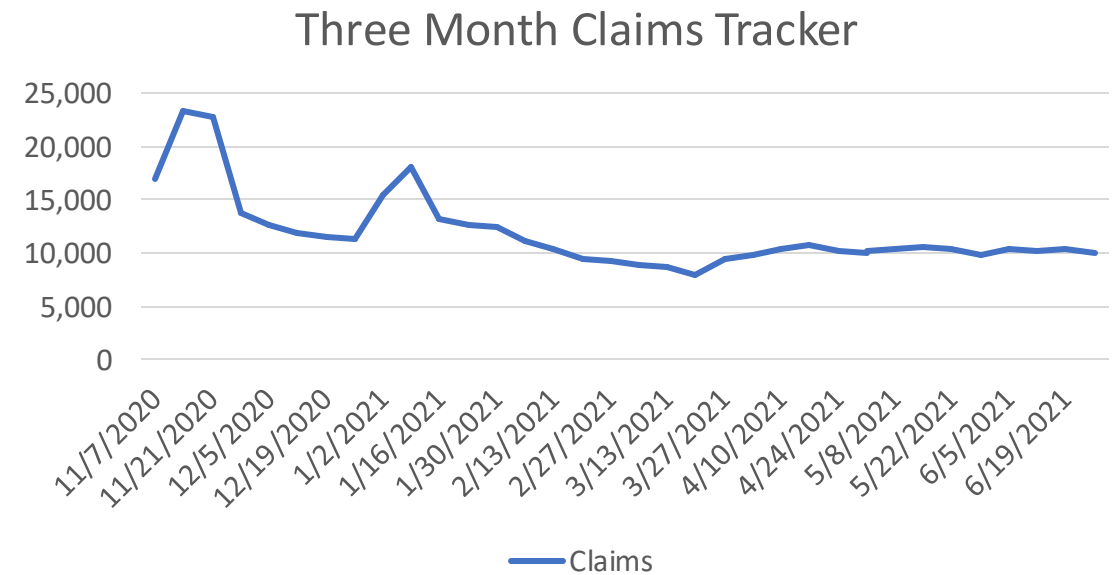
- Job recovery has remained stagnant in the Capital Region from April to May.
- The Baton Rouge MSA has recovered at a slower rate compared to out-of-state peer metros.
- The Baton Rouge region and the Lafayette region are now recovering at the same speed; the New Orleans region still lags behind.

# Capital Region COVID-19 Indicator Dashboard

Unemployment claims decreased this week after an increase the week before.

Parish	6-12-2021	6-19-2021	6-26-2021
Ascension	1,253	1,301	1,247
East Baton Rouge	6,366	6,417	6,297
East Feliciana	178	181	175
Iberville	471	480	470
Livingston	1,088	1,050	1,032
Point Coupee	292	306	301
St. Helena	151	152	150
West Baton Rouge	334	347	333
West Feliciana	78	83	79
<b>BR MSA total</b>	<b>10,211</b>	<b>10,317</b>	<b>10,084</b>

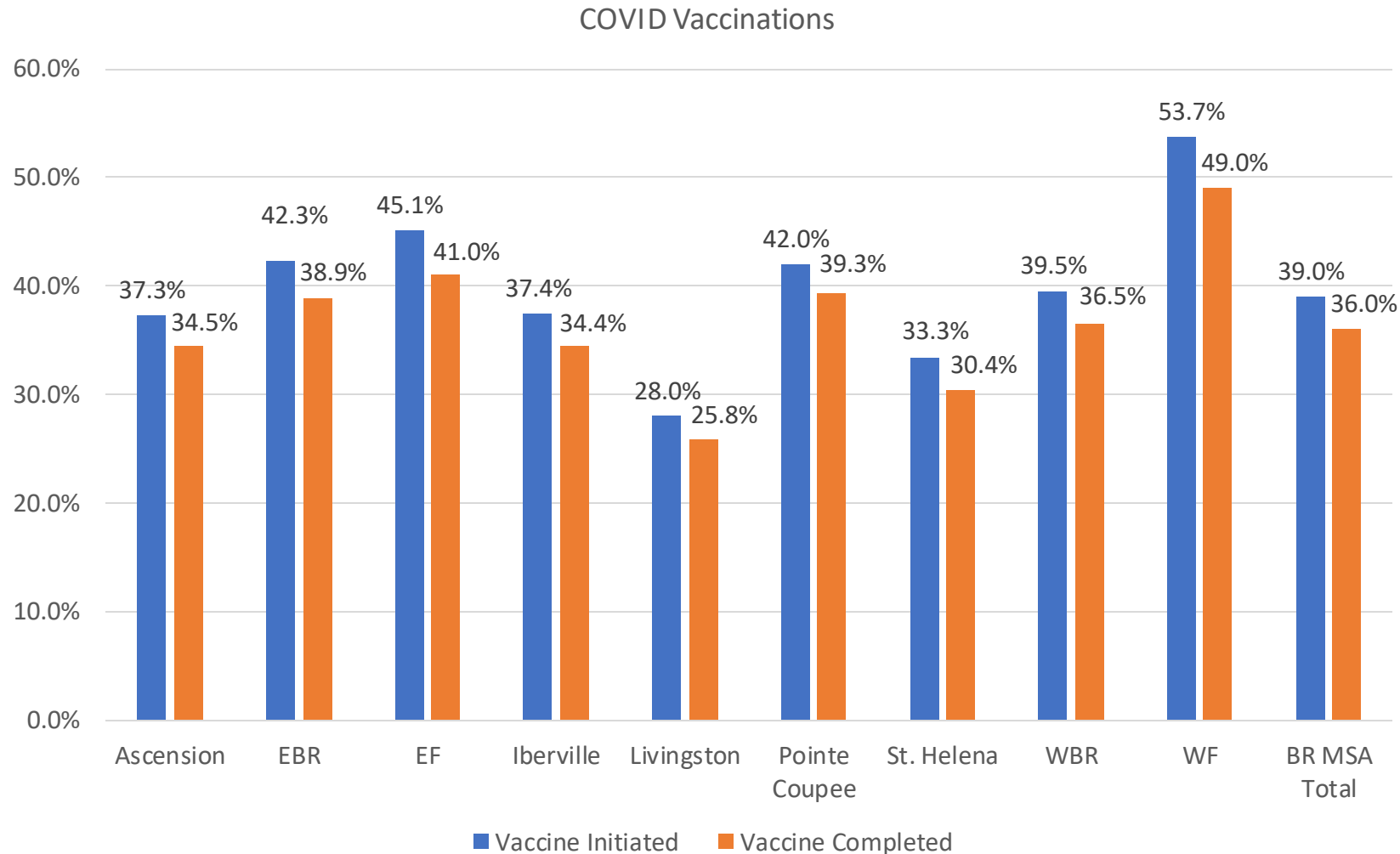
- Weekly unemployment claims continue to stagnate at a high level despite more than 33,000 job openings in the region, with a median posted wage rate of \$22 an hour.



Sources: Louisiana Workforce Commission, BRAC Analysis.  
 Dates signify initial plus continued claims for week ending on that day.

# Capital Region COVID-19 Indicator Dashboard

Vaccine uptake varies significantly among Capital Region parishes.



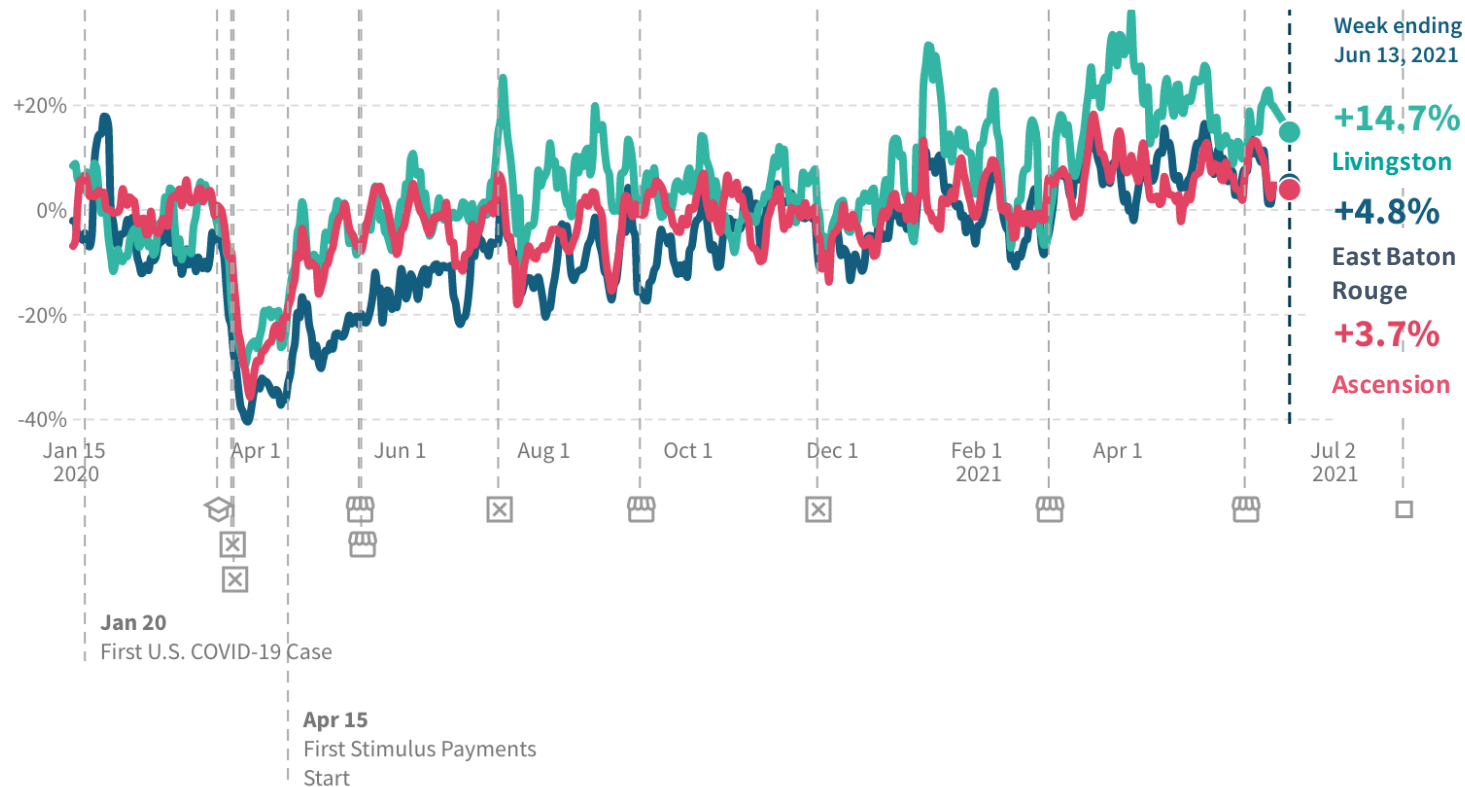
- Eight of the nine parishes in the region have a vaccine initiation rate of 33.0% or greater. West Feliciana has the highest initiation rate of 53.7, while Livingston is lagging at 28.0%.
- The Capital Region has an initiation rate of nearly 40.0% of the total population. Because of the high level of cross-parish commuting for work – half of those employed in EBR live outside the parish – it’s vital that the entire region continues to work toward herd immunity.

Source: Louisiana Department of Health, through 7/1/21.

Note: All percentages based on total population.

# Capital Region COVID-19 Indicator Dashboard

How has consumer spending been impacted by the pandemic?



- Consumer spending remained significantly above pre-pandemic levels in the metro's three largest parishes through mid-June.
- However, unemployment in the Capital Region remains high at 6.0% - a full 2.2% higher than the pre-pandemic rate of 3.8%.
- This asymmetry is due at least in part to the federal unemployment enhancement, which has allowed those receiving it to maintain a high median income without seeking employment.

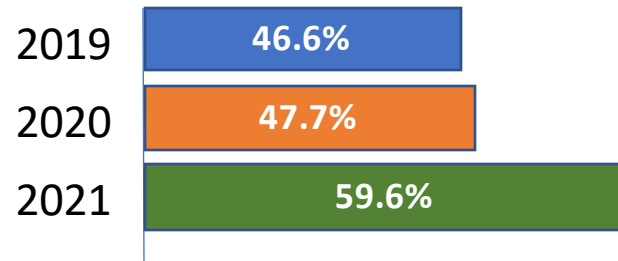
Source: Opportunity Insights, measures spending compared to January 2020.

# Capital Region COVID-19 Indicator Dashboard

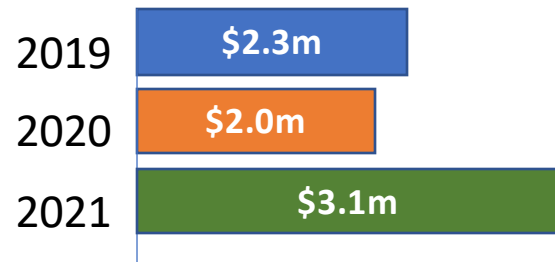
How has travel been impacted during the pandemic?

## Hotel Occupancy

June 27 – July 3



Revenue June 27 – July 3



- Occupancy for the week leading up to the Fourth of July was significantly higher than for the same week in 2019 and 2020.
- Proportionately, the increase in revenues for this week in 2021 over 2019 and 2020 are even greater.
- The coming weeks will indicate whether this is a pattern due to pent up demand and a renewed willingness to travel, or a temporary increase due to the holiday.



# Capital Region COVID-19 Indicator Dashboard

How has travel been impacted during the pandemic?

## CATS Transportation Ridership

Week Ending	2019-2020 Ridership	2020-2021 Ridership	%age Change
April 25th	46,838	15,846	-66.2%
June 20th	46,730	23,944	-48.8%
August 15th	50,714	25,192	-50.3%
October 17th	47,187	26,998	-42.8%
December 19th	45,969	21,841	-52.5%
February 27th	44,433	24,641	-44.5%
April 24th	15,846	20,928	31.1%
May 29th	21,115	21,120	0.02%
June 26th	22,611	19,522	-13.6%

- Ridership was down over-the-year, and still significantly down compared to pre-pandemic numbers.

## Residential Travel

Parish	Retail & Recreation	Grocery & Pharmacy	Parks	Transit Stations	Workplace	Residential
Ascension	-1%	+2%	-	-	+6%	0%
East Baton Rouge	-14%	-5%	-22%	-28%	-19%	+1%
East Feliciana	-	-	-	-	-20%	-
Iberville	-	-12%	-	+37%	-31%	+5%
Livingston	+1%	+13%	+11%	+21%	-3%	0%
Point Coupee	-	-	-	-	-12%	-
St. Helena	-	-	-	-	-35%	-
West Baton Rouge	+11%	+9%	-	+40%	-12%	+4%
West Feliciana	-	-	-	-	-42%	-

- Travel to work has varied across the parishes but is similar to pre-pandemic numbers.

Source: Google Mobility Change Report, June 26, 2021; Capital Area Transit System.