

COVID-19 Indicator Dashboard

August 12, 2021

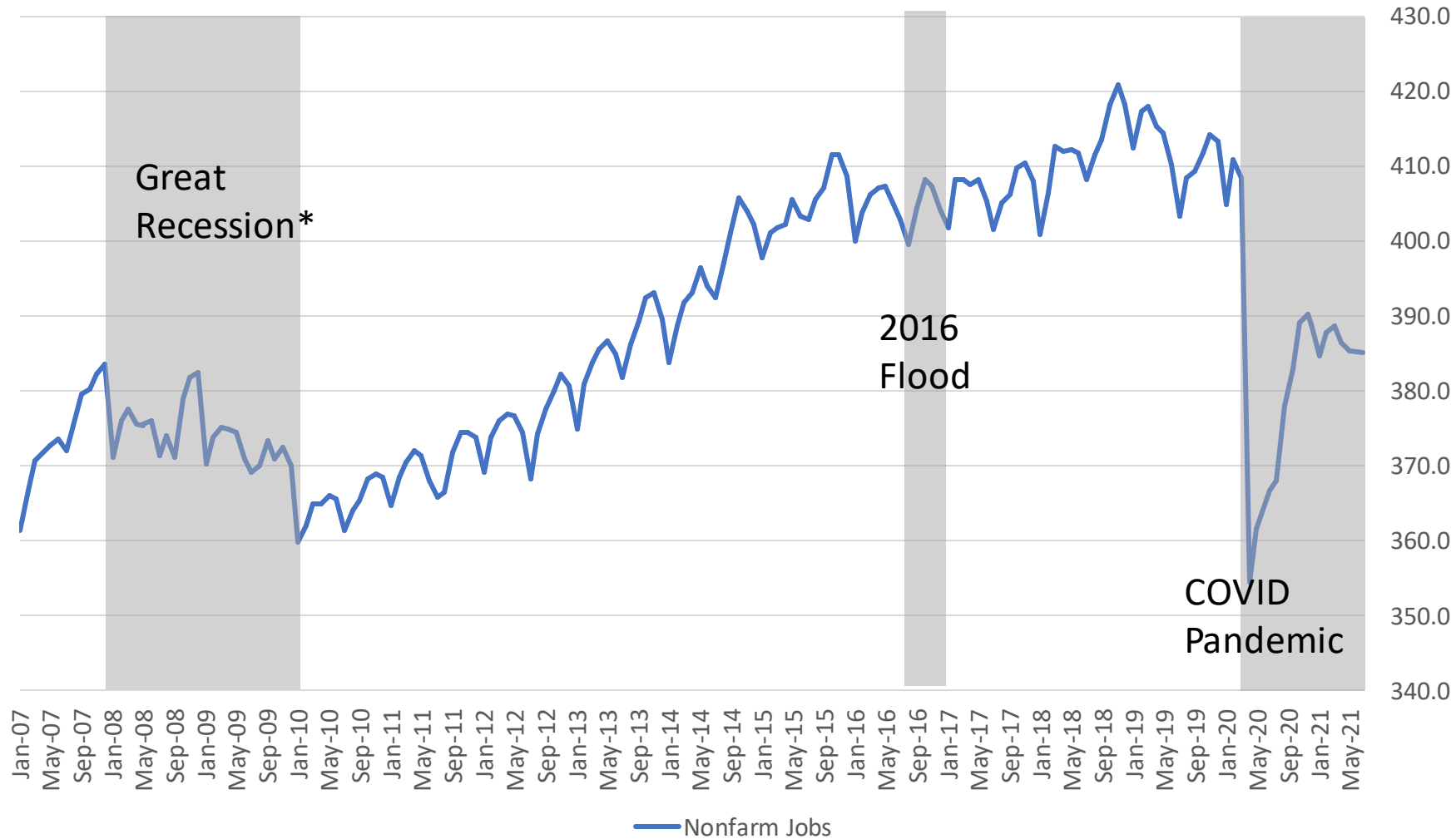
Lead Researcher: Andrew Fitzgerald



Baton Rouge Area Chamber®

Capital Region COVID-19 Indicator Dashboard

The region lost 400 jobs in June, as job recovery has continued to stagnate through the summer.



Major BR MSA Job Losses

- Great Recession* (12/07 – 1/10): -6.2%
- 2016 Flood (8/16): -1.0%
 - Led to lower job count in high-employment times like holidays
- 2020 Covid-19 Pandemic (3/20 – 6/21): -5.7%
 - -13.2% in April 2020, at the lowest point for nonfarm jobs

Source: BLS, LWC, BRAC Analysis.

*Technical dates of the recession are 12/2007 to 6/2009, but greatest negative job effects felt in Baton Rouge metro area in 1/2010

Capital Region COVID-19 Indicator Dashboard

The Construction industry still shows the greatest amount of pandemic-related job loss, Government jobs saw a massive over-the-month drop.

Major industries in the Capital Region

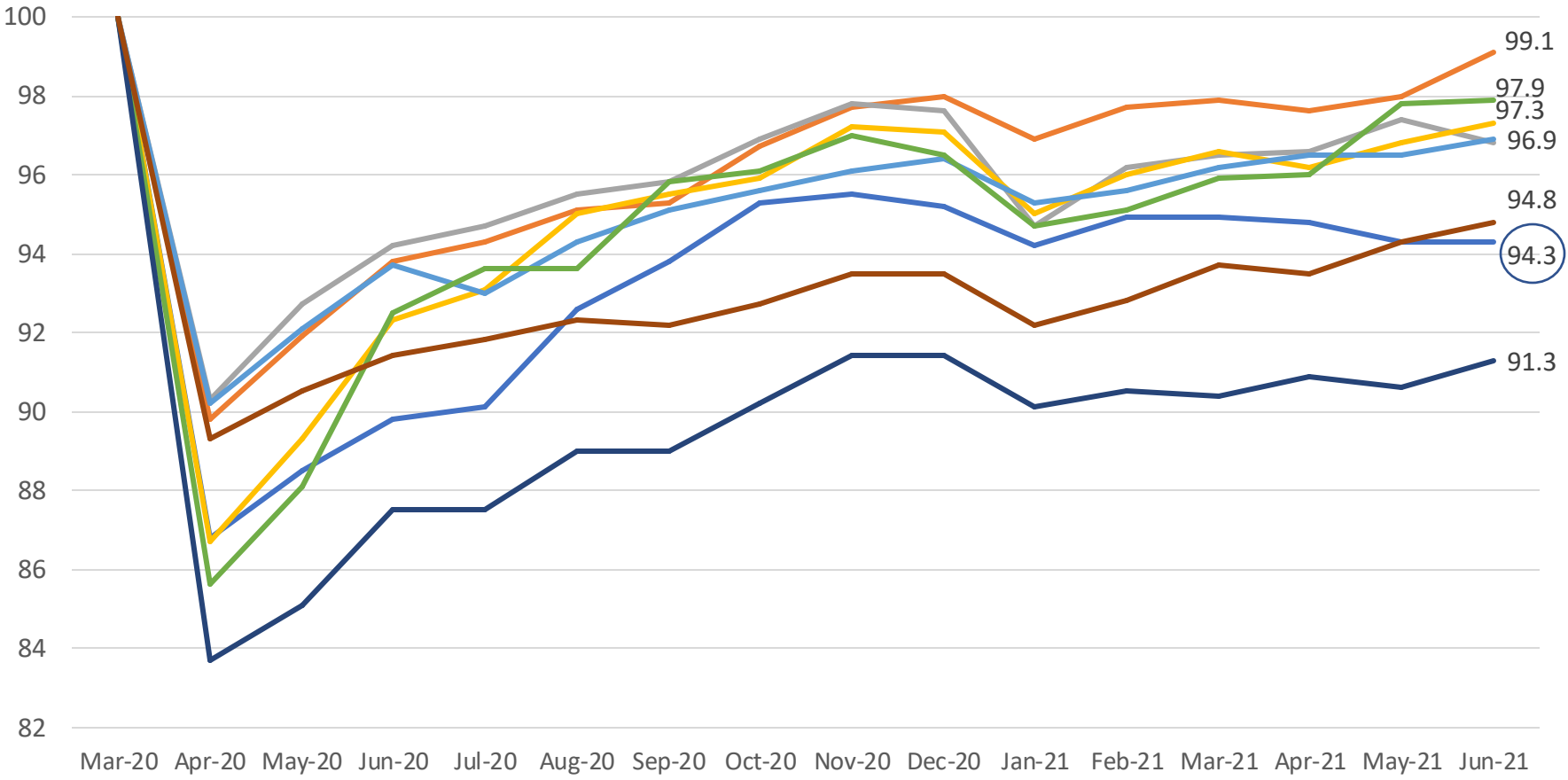
Industry	COVID Job Loss	%age Lost
Construction	-6,700	-14.1%
Professional Services	-2,200	-4.4%
Education & Healthcare	-1,400	-2.6%
Leisure & Hospitality	-1,200	-3.1%
Trade, Transportation & Utilities	-2,500	-3.6%
Manufacturing	-900	-3.0%
Government	-5,000	-6.4%

- While nearly every private industry saw positive over-the-month growth, led by Education and Healthcare (+1,600 jobs) and Professional Services (+1,100), jobs in Government plummeted by 4,300, leading to a net loss of jobs over-the-month.
- The Construction industry remains the hardest-hit sector with the greatest job loss and percentage still gone, with nearly 8,000 jobs or 16% of pre-pandemic jobs still gone.
- The Leisure & Hospitality sector, once the hardest-hit, added another 600 jobs over the month, and 3,600 since January.

Capital Region COVID-19 Indicator Dashboard

Louisiana's largest metros are lagging behind in job recovery compared to out-of-state peer metros.

Metro Area Employment Index



- Job recovery now notably lags out-of-state peer cities, and is ahead of only New Orleans.
- This data is only through June, a month in which a number of states in which peer cities are located ended enhanced UI benefits.
- As data for Louisiana related to the end of enhanced unemployment in July becomes available, reentry into the workforce may be evident.

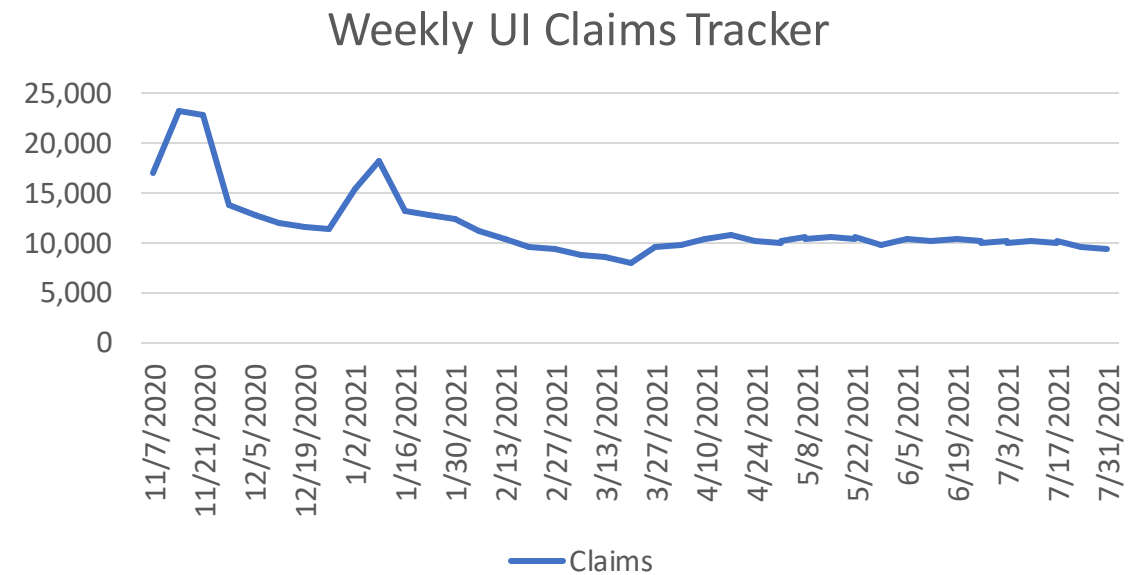
Source: BLS, BRAC Analysis.

Capital Region COVID-19 Indicator Dashboard

Unemployment claims decreased this week after an increase the week before.

Parish	7/17/2021	7/24/2021	7/31/2021
Ascension	1,257	1,207	1,151
East Baton Rouge	6,263	5,894	5,807
East Feliciana	180	180	168
Iberville	492	468	447
Livingston	1,062	996	1,021
Point Coupee	302	284	273
St. Helena	146	129	122
West Baton Rouge	324	306	301
West Feliciana	88	78	74
BR MSA total	10,114	9,542	9,364

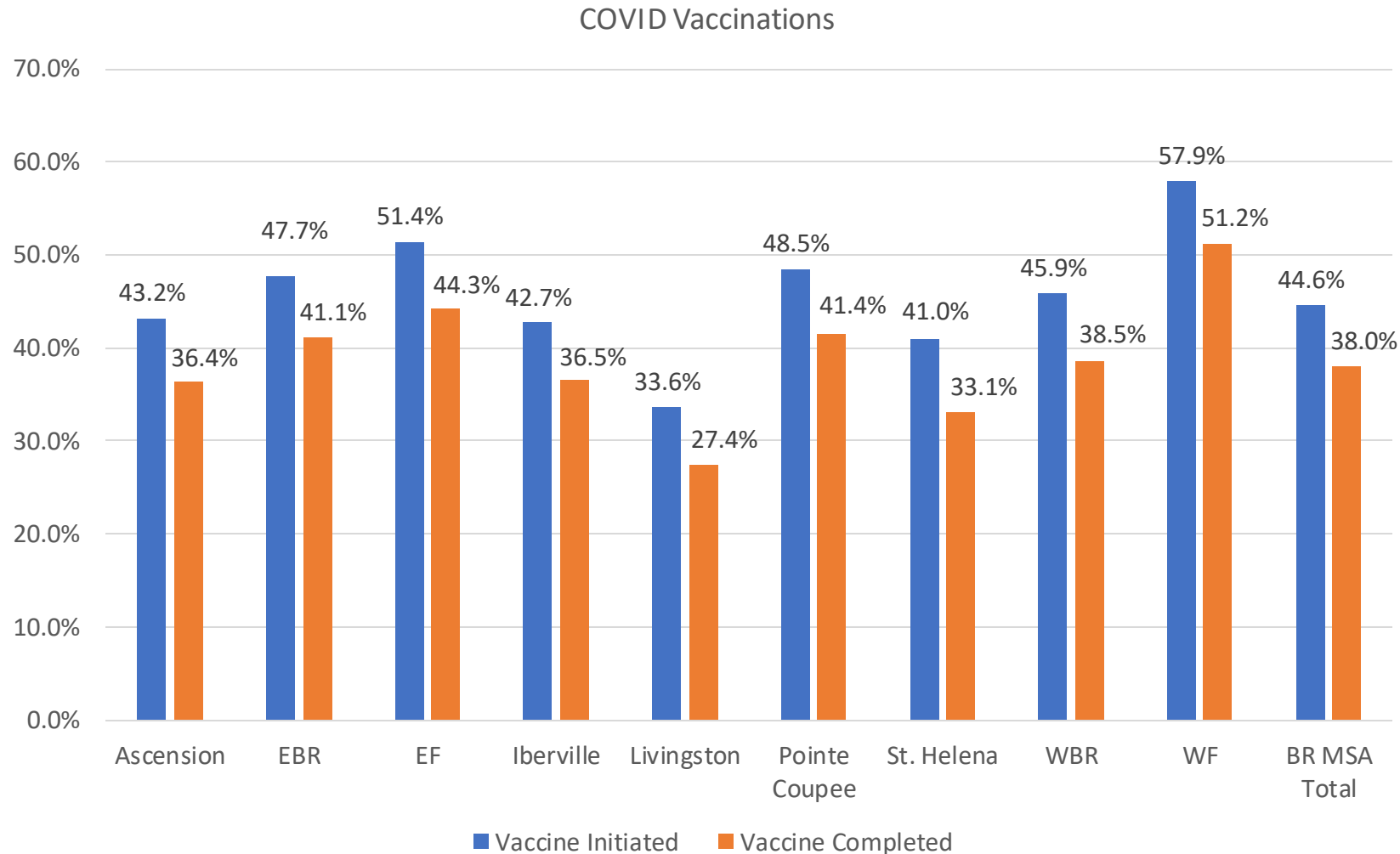
- Weekly unemployment claims fell for the third consecutive week, and hit their lowest point since March as enhanced unemployment benefits ended.



Sources: Louisiana Workforce Commission, BRAC Analysis.
 Dates signify initial plus continued claims for week ending on that day.

Capital Region COVID-19 Indicator Dashboard

Vaccine uptake varies significantly among Capital Region parishes.



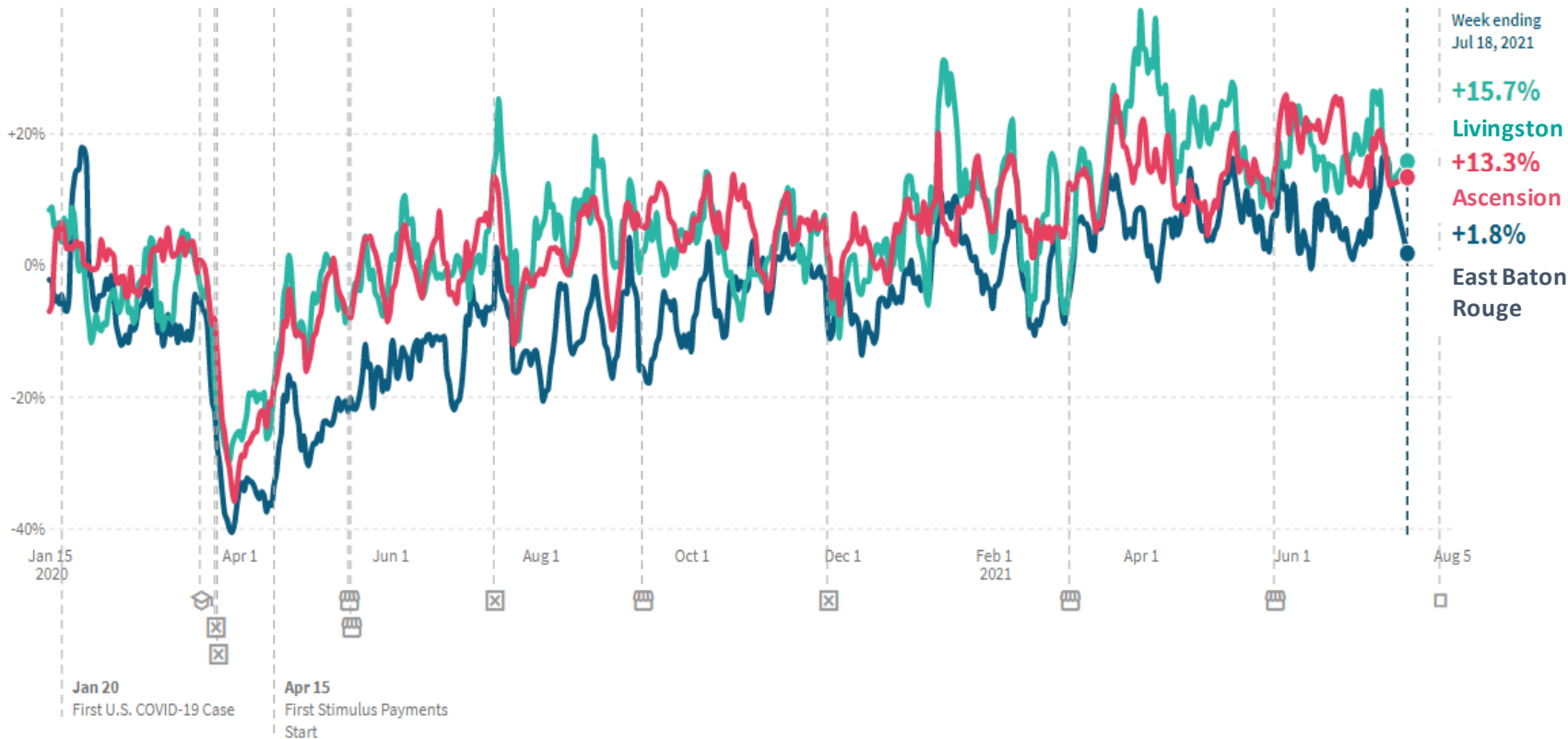
- The region saw a significant 5.6% uptick in vaccine initiations over the month.
- St. Helena led the way with an increase of 7.7%, followed by Pointe Coupee (6.5%) and West Baton Rouge (6.4%).
- The significant jump in initiations will lead to an increase in completed vaccinations next month.
- The increase in initiations may stay steady if the state continues to set records for hospitalizations.

Source: Louisiana Department of Health, through 8/5/21.

Note: All percentages based on total population.

Capital Region COVID-19 Indicator Dashboard

How has consumer spending been impacted by the pandemic?



- Consumer spending remained above pre-pandemic levels in the metro's three largest parishes through mid-July.

Over the next month, it will be important to monitor whether spending stays high as enhanced unemployment benefits have ended.

- August data will be important, as we will be able to see the effects of the end of enhanced unemployment, the opportunity for parents to return to work with school starting, and the fourth COVID wave.

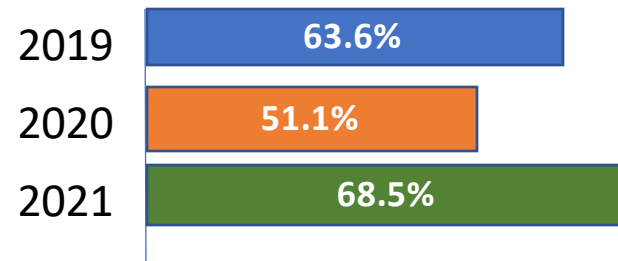
Source: Opportunity Insights, measures spending compared to January 2020.

Capital Region COVID-19 Indicator Dashboard

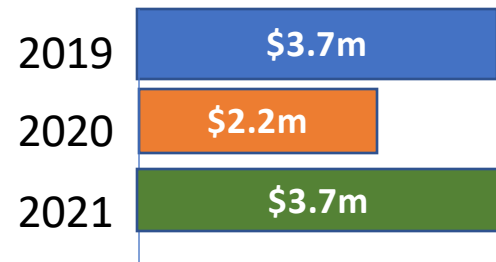
How has travel been impacted during the pandemic?

Hotel Occupancy

July 25 – July 31



Revenue July 25 – July 31



- Occupancy for the last week of July was higher than that of both 2020 and 2019, indicating that recovery in hospitality is underway.
- While revenues are much higher than in 2020 and even with 2019, price per room appears to be down compared to 2019, which had identical revenues despite lower occupancy.
- In the coming month, occupancy may fall as schools begin session and concern about the Delta COVID variant rises.

Capital Region COVID-19 Indicator Dashboard

How has travel been impacted during the pandemic?

CATS Transportation Ridership

Week Ending	2020 Ridership	2021 Ridership	%age Change
June 20th	46,730	23,944	-48.8%
August 15th	50,714	25,192	-50.3%
October 17th	47,187	26,998	-42.8%
December 19th	45,969	21,841	-52.5%
February 27th	44,433	24,641	-44.5%
April 24th	15,846	20,928	31.1%
May 29th	21,115	21,120	0.02%
June 26th	22,611	19,522	-13.6%
August 1st	21,874	19,622	-10.3%

- As the fourth wave continues to rise, ridership is down over 2020 numbers.

Residential Travel

Parish	Retail & Recreation	Grocery & Pharmacy	Parks	Transit Stations	Workplace	Residential
Ascension	+11%	+10%	-	-	+5%	+2%
East Baton Rouge	-10%	+2%	-28%	-28%	-21%	+3%
East Feliciana	-	-	-	-	-18%	-
Iberville	-3%	-7%	-	+25%	-39%	+7%
Livingston	+5%	+16%	-11%	+27%	-2%	+2%
Point Coupee	-	-	-	-	-19%	-
St. Helena	-	-	-	-	-25%	-
West Baton Rouge	+13%	+16%	-	+31%	-28%	+6%
West Feliciana	-	-	-	-	-38%	-

- Travel to work and retail & recreation rose in nearly every parish.

Source: Google Mobility Change Report, August 1, 2021; Capital Area Transit System.