

COVID-19 Indicator Dashboard

February 11, 2021

Lead Researcher:
Andrew Fitzgerald



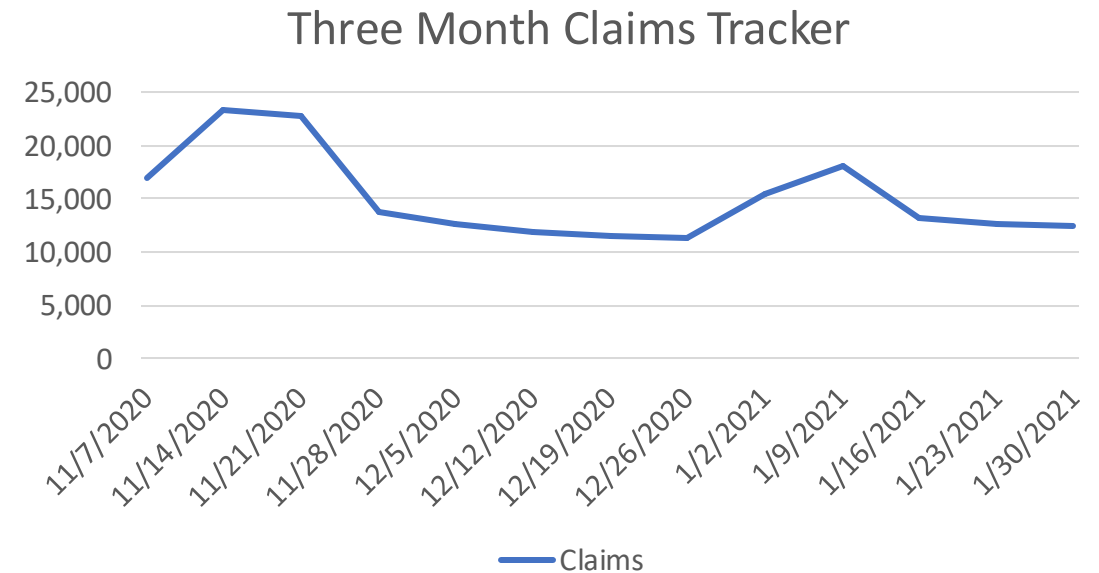
Baton Rouge Area Chamber®

Capital Region COVID-19 Indicator Dashboard

Unemployment claims fell over-the-week for the last three weeks of January.

Parish	1-16-2021	1-23-2021	1-30-2021
Ascension	1,773	1,715	1,695
East Baton Rouge	7,856	7,599	7,326
East Feliciana	233	209	240
Iberville	617	591	580
Livingston	1,677	1,570	1,453
Point Coupee	369	341	390
St. Helena	161	154	145
West Baton Rouge	437	421	422
West Feliciana	121	132	119
BR MSA total	13,244	12,732	12,370

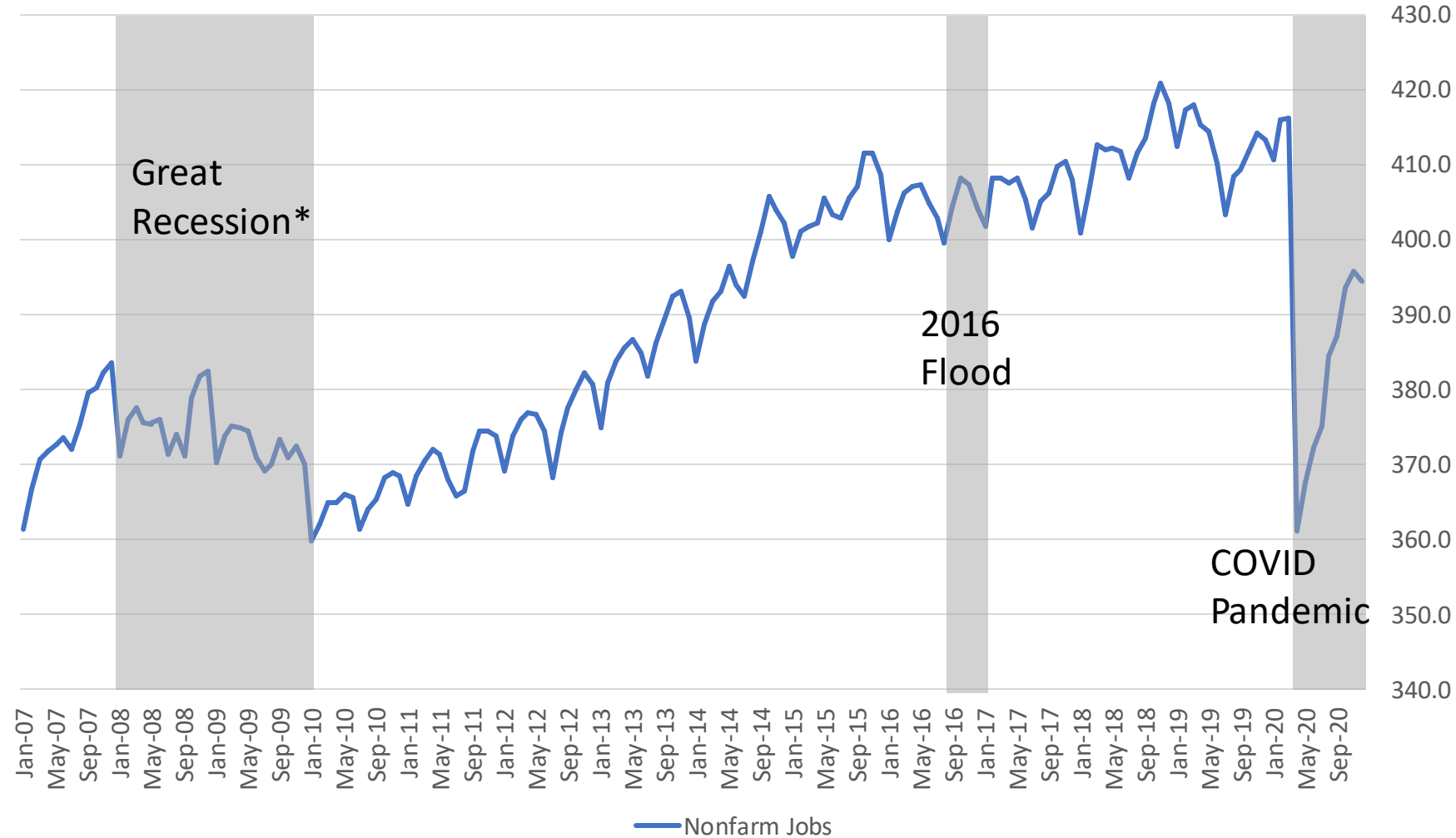
- As Congress works to pass another COVID relief bill, there is a high likelihood that it will contain extended eligibility and enhancement for unemployment.



Sources: Louisiana Workforce Commission, BRAC Analysis.
 Dates signify initial plus continued claims for week ending on that day.

Capital Region COVID-19 Indicator Dashboard

The region lost 1,200 jobs in December, ending seven consecutive months of positive growth.



Major BR MSA Job Losses

- Great Recession* (12/07 – 1/10): -6.2%
- 2016 Flood (8/16): -1.0%
 - Led to lower job count in high-employment times like holidays
- 2020 Covid-19 Pandemic (3/20 – 12/20): -5.2%
 - -13.2% in April, at the lowest point for nonfarm jobs

Source: BLS, LWC, BRAC Analysis.

*Technical dates of the recession are 12/2007 to 6/2009, but greatest negative job effects felt in Baton Rouge metro area in 1/2010

Capital Region COVID-19 Indicator Dashboard

Leisure & Hospitality and Construction jobs still show major pandemic-related losses.

Major industries in the Capital Region

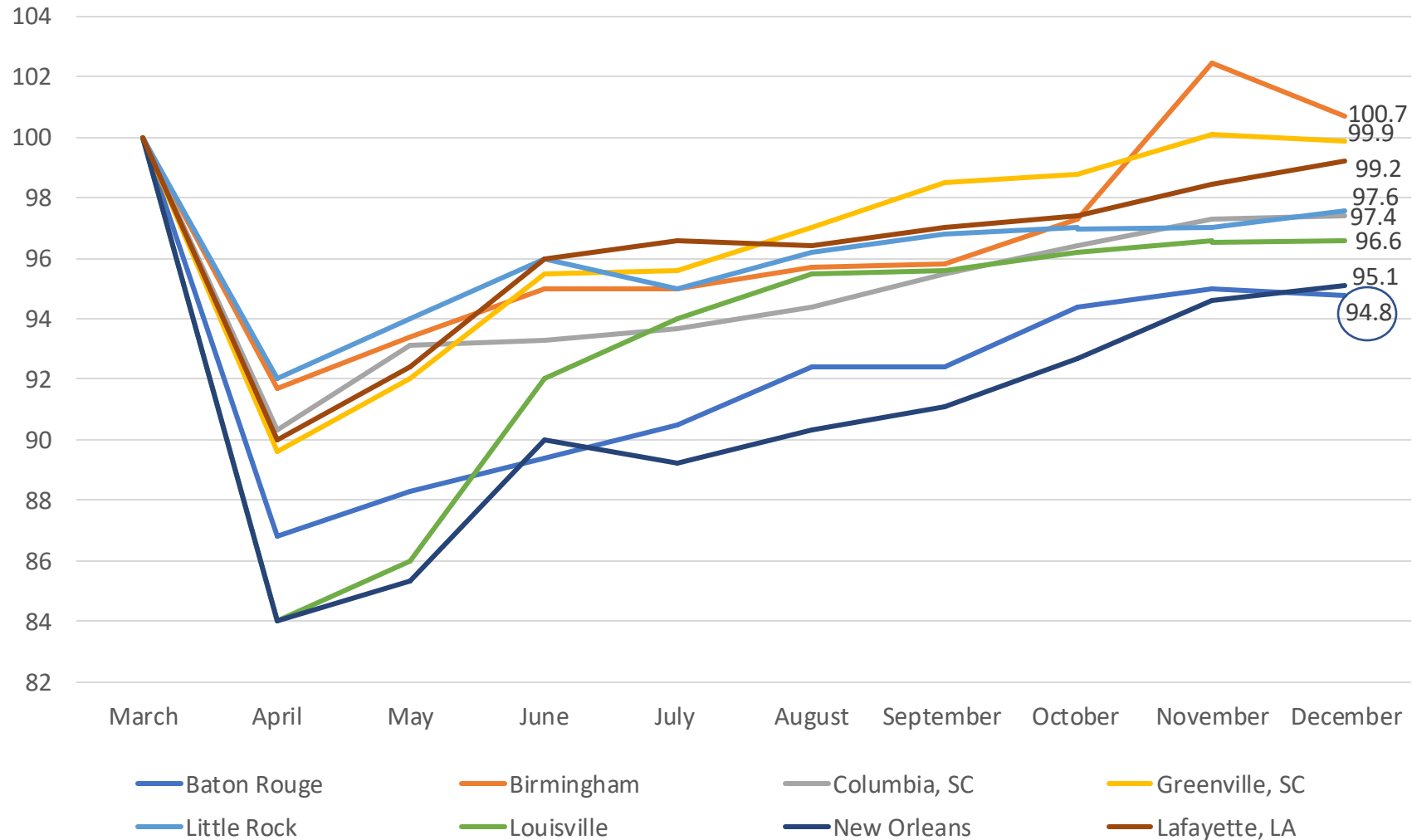
Industry	COVID Job Loss	%age Lost
Leisure & Hospitality	-8,700	-20.6%
Construction	-7,400	-14.0%
Education & Healthcare	-2,200	-4.2%
Professional Services	-2,100	-4.2%
Manufacturing	-700	-2.3%
Government	-200	-0.3%
Trade, Transportation & Utilities	+1,800	+2.6%

- The metro area lost 1,200 jobs from November to December.
- Most industry growth was flat over-the-month. The largest movers were Trade, Transportation & Utilities (+900), Government (-600), and Professional Services (-500).
- Job loss in December for Leisure & Hospitality is especially telling – the sector had the fewest employees for the month since 2010.

Capital Region COVID-19 Indicator Dashboard

The Capital Region has higher job loss in Leisure & Hospitality and Construction than its peers.

Metro Area Employment Index

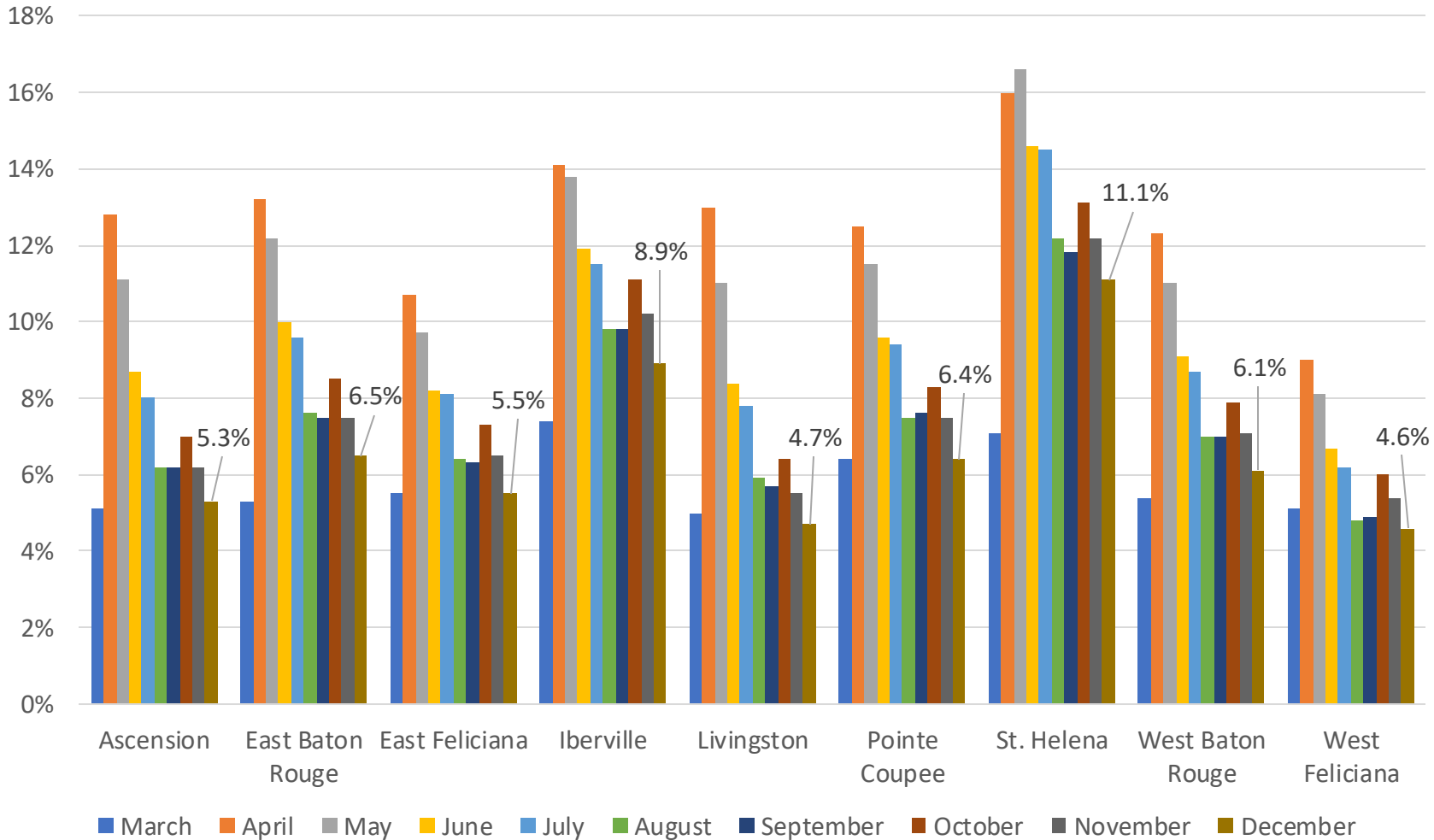


- Job recovery in Baton Rouge and New Orleans has lagged that of out-of-state peers, as well as Lafayette.
- Over-the-month job losses have pushed Baton Rouge to the lowest job recovery rate out of all selected peer metro areas.

Capital Region COVID-19 Indicator Dashboard

The December regional unemployment rate is 6.1%, notably lower than the state and national average.

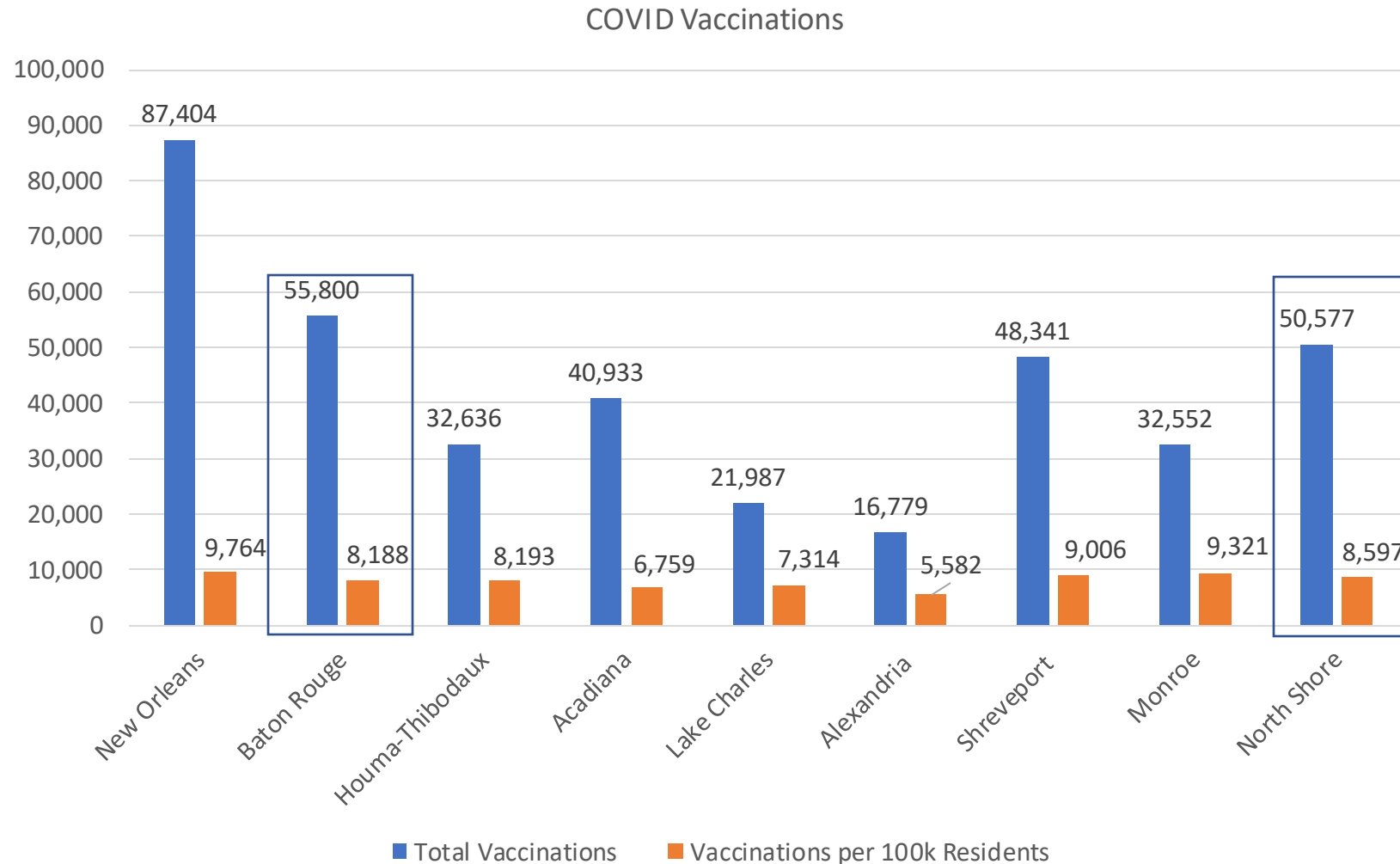
Unemployment Rates by Parish



- Unemployment fell in each parish in the metro area from November to December.
- Seven of the nine Capital Region parishes have rates below the US rate of 6.7%.
- The regional rate is 1.1% lower than the November rate, and only 1.6% higher than the December 2019 rate.

Capital Region COVID-19 Indicator Dashboard

The Capital Region is lagging behind most others regarding per capita vaccinations.



- The Capital Region had nearly 8.2% of its population vaccinated by 2/5/21.
- New Orleans (9.8%), Monroe (9.3%), and Shreveport (9.0%) have the highest regional vaccination rates in the state.
- Louisiana Department of Health classifies two Capital Region parishes as part of North Shore, so to assess vaccination's within BRAC's entire footprint, both regions must be tracked.

Source: Louisiana Department of Health, through 2/5/21

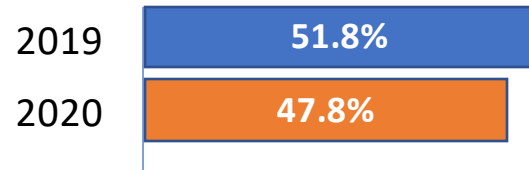
Baton Rouge Region: **Ascension, East Baton Rouge, East Feliciana, Iberville, Pointe Coupee, West Baton Rouge, West Feliciana**. North Shore Region: **Livingston, St. Helena, St. Tammany, Tangipahoa, Washington**

Capital Region COVID-19 Indicator Dashboard

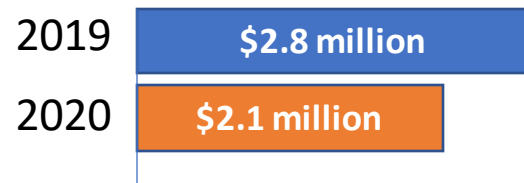
How has travel been impacted during the pandemic?

Hotel Occupancy

January 24 – January 30



Revenue January 24 – January 30

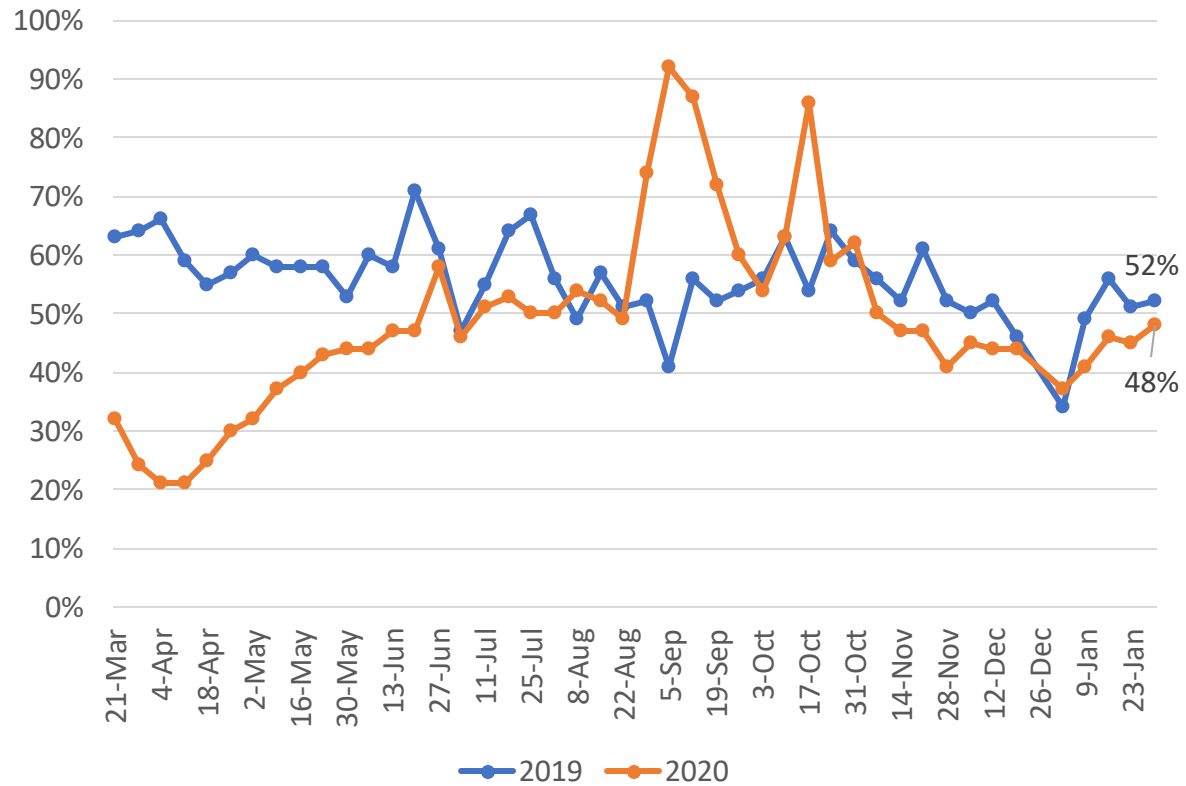


- The last week of the year had a bit higher occupancy than the last week of 2019.
- Revenues over the year are virtually identical, though lower than most weeks.
- A recent national survey of hotel owners found that 67% say they could not survive another six months at current occupancy levels, highlighting the peril this and other travel-based industries are in until vaccines are widely distributed.

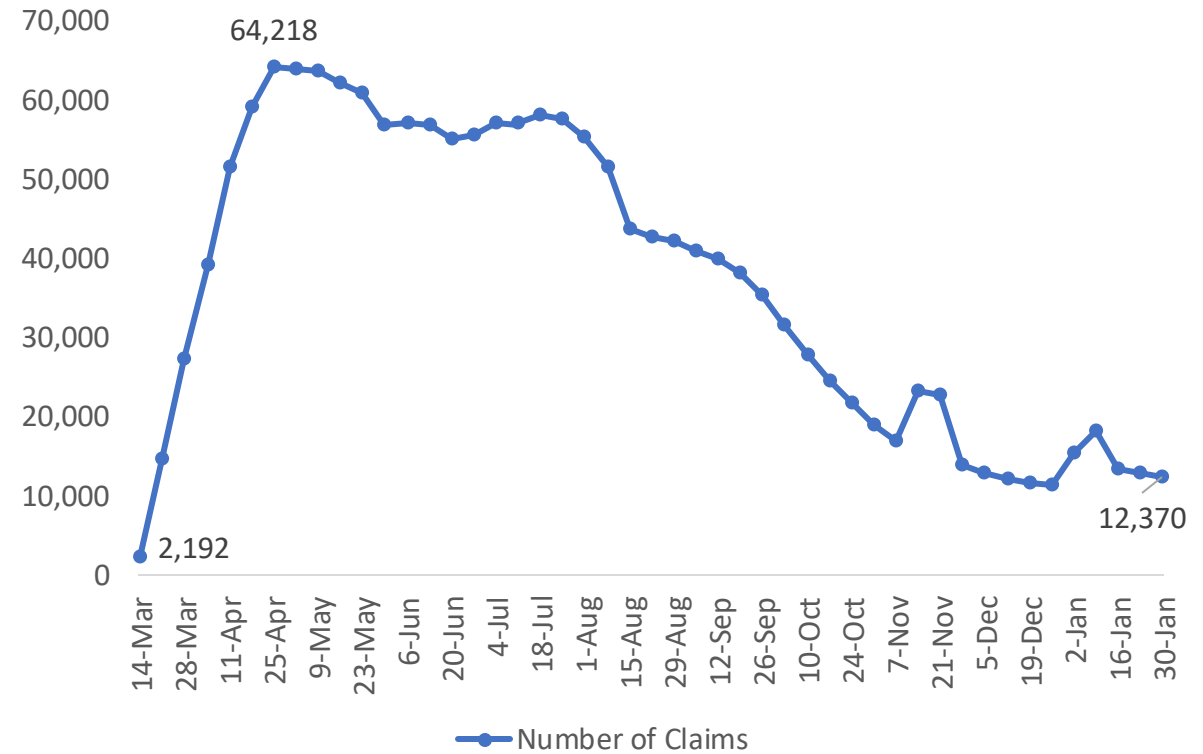
Capital Region COVID-19 Indicator Dashboard

Hotel occupancy was slightly higher than the same week ending 2019 and beginning 2020, while unemployment claims spiked to start 2021.

Hotel Occupancy



Weekly Combined UI Claims



Capital Region COVID-19 Indicator Dashboard

How has travel been impacted during the pandemic?

CATS Transportation Ridership

Week Ending	2019 Ridership	2020 Ridership	%age Change
April 25th	46,838	15,846	-66.2%
May 30th	47,289	21,115	-55.3%
June 20th	46,730	23,944	-48.8%
August 15th	50,714	25,192	-50.3%
September 12th	53,930	23,503	-56.4%
November 28th	38,163	13,324	-65.1%
December 19th	45,969	21,841	-52.5%
January 2nd	40,349	18,670	-53.7%
January 30th	50,140	26,134	-47.9%

- CATS ridership was at one of the highest points since the summer last week.

Residential Travel

Parish	Retail & Recreation	Grocery & Pharmacy	Parks	Transit Stations	Workplace	Residential
Ascension	-7%	-3%	-	-	-8%	+4%
East Baton Rouge	-20%	-10%	-10%	-18%	-15%	+4%
East Feliciana	-	-	-	-	-11%	-
Iberville	-57%	-16%	-	-7%	-26%	+7%
Livingston	-6%	+2%	-13%	-1%	-7%	+3%
Point Coupee	-	-	-	-	-6%	-
St. Helena	-	-	-	-	-20%	-
West Baton Rouge	-15%	-6%	-	+3%	-22%	+7%
West Feliciana	-	-	-	-	-23%	-

- Travel to work is the closest it has been to pre-pandemic numbers for the Capital Region.

Source: Google Mobility Change Report, January 31, 2021;
Capital Area Transit System.