

# COVID-19 Indicator Dashboard

January 14, 2021

Lead Researcher:  
Andrew Fitzgerald



Baton Rouge Area Chamber®

# Capital Region COVID-19 Indicator Dashboard

Unemployment claims rose over-the-week as federal enhancement and extension of benefits began.

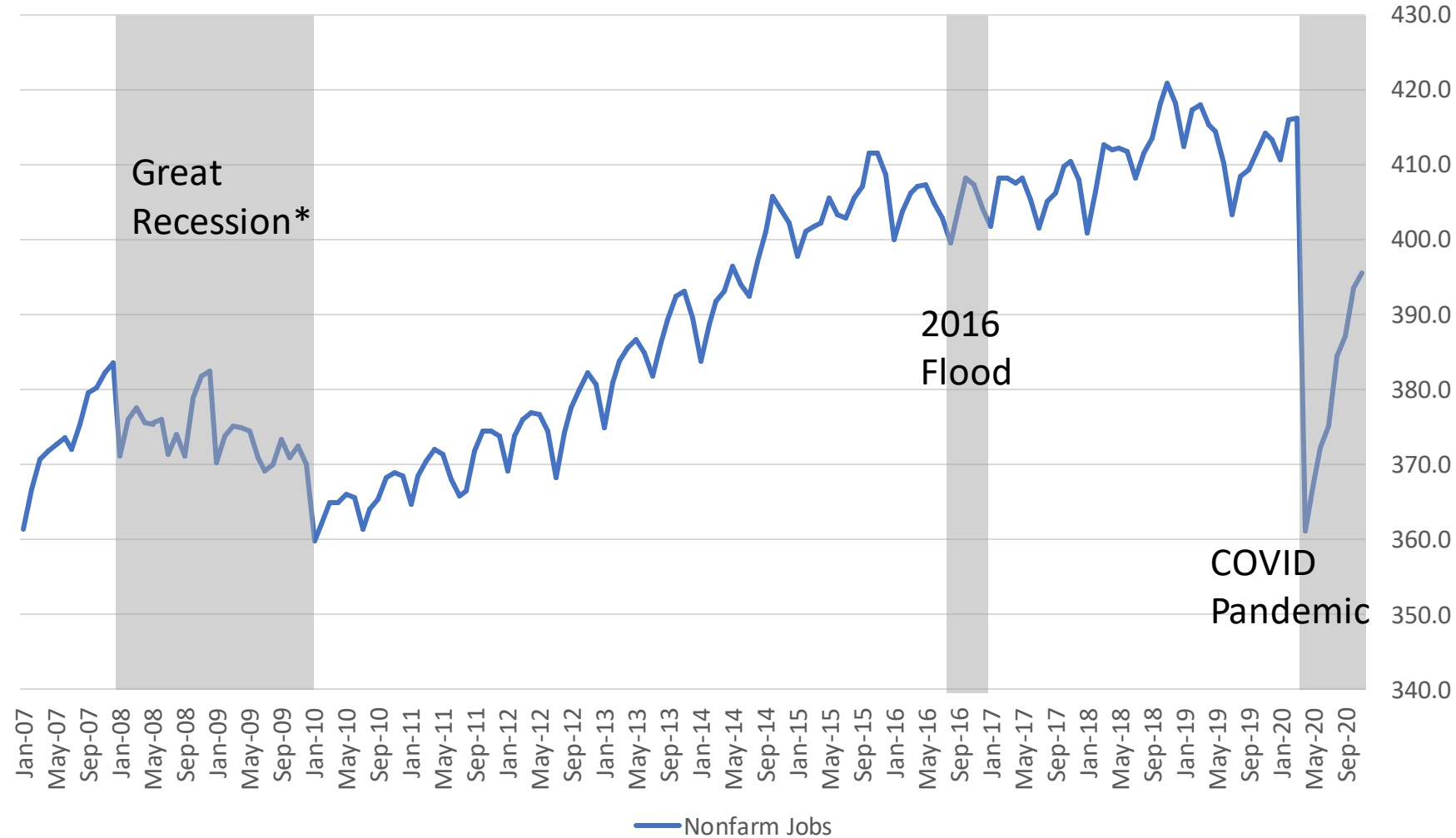
Parish	12-19-2020	12-26-2020	1-2-2021
Ascension	1,538	1,501	1,907
East Baton Rouge	6,760	6,786	9,557
East Feliciana	199	211	253
Iberville	573	540	706
Livingston	1,448	1,399	1,791
Point Coupee	307	321	377
St. Helena	130	131	166
West Baton Rouge	420	397	502
West Feliciana	122	113	161
<b>BR MSA total</b>	<b>11,497</b>	<b>11,399</b>	<b>15,420</b>

- Unemployment claims rose over the last week before publication, with all areas seeing an increase.
- It is noteworthy that this increase in cases came after UI benefits were extended and enhanced by the federal government. Claims over the next few weeks should provide insights as to whether the extension and enhancement played a role in increased claims.

Sources: Louisiana Workforce Commission, BRAC Analysis.  
Dates signify initial plus continued claims for week ending on that day.

# Capital Region COVID-19 Indicator Dashboard

The region added 2,000 jobs in November, marking seven consecutive months of job recovery.



## Major BR MSA Job Losses

- Great Recession\* (12/07 – 1/10): -6.2%
- 2016 Flood (8/16): -1.0%
  - Led to lower job count in high-employment times like holidays
- 2020 Covid-19 Pandemic (3/20 – 11/20): -5.0%
  - -13.2% in April, at the lowest point for nonfarm jobs

Source: BLS, LWC, BRAC Analysis.

\*Technical dates of the recession are 12/2007 to 6/2009, but greatest negative job effects felt in Baton Rouge metro area in 1/2010

# Capital Region COVID-19 Indicator Dashboard

Leisure & Hospitality and Construction jobs still show major pandemic-related losses.

## Major industries in the Capital Region

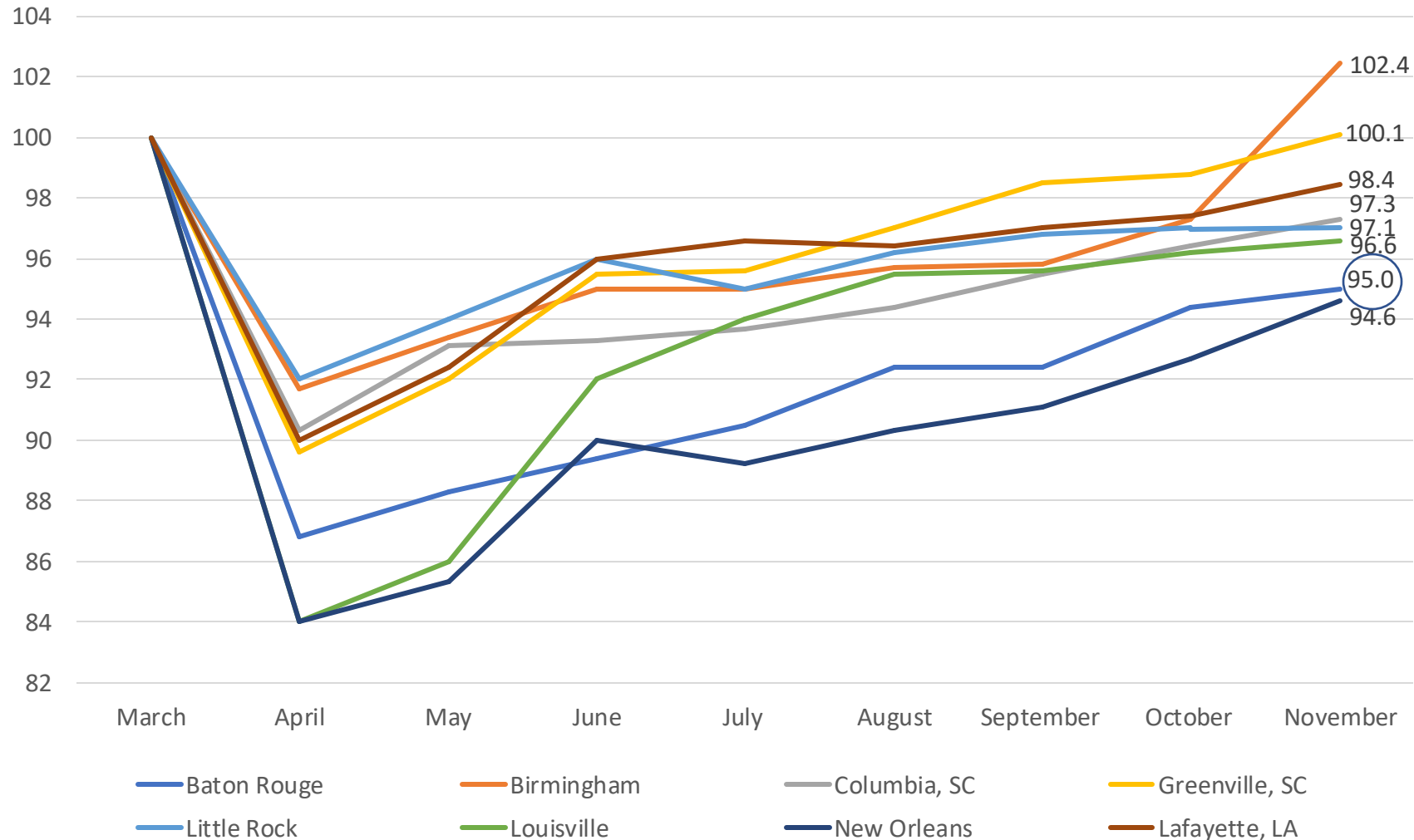
Industry	COVID Job Loss	%age Lost
Leisure & Hospitality	-9,200	-21.7%
Construction	-6,000	-11.4%
Education & Healthcare	-1,700	-3.2%
Manufacturing	-1,000	-3.3%
Professional Services	-1,800	-3.6%
Trade, Transportation & Utilities	+600	+0.8%
Government	+400	+0.5%

- The metro area gained 2,000 jobs from October to November.
- Major movers were Leisure & Hospitality (+900), Professional & Business Services (-1,500), and Trade, Transportation & Utilities (+1,000).
- The majority of the 20,800 jobs still lost from the pandemic are in the Leisure & Hospitality and Construction sectors. These sectors are limited due to government restrictions on their opening and uncertainty in the industrial space, respectively.

# Capital Region COVID-19 Indicator Dashboard

The Capital Region has higher job loss in Leisure & Hospitality and Construction than its peers.

## Metro Area Employment Index

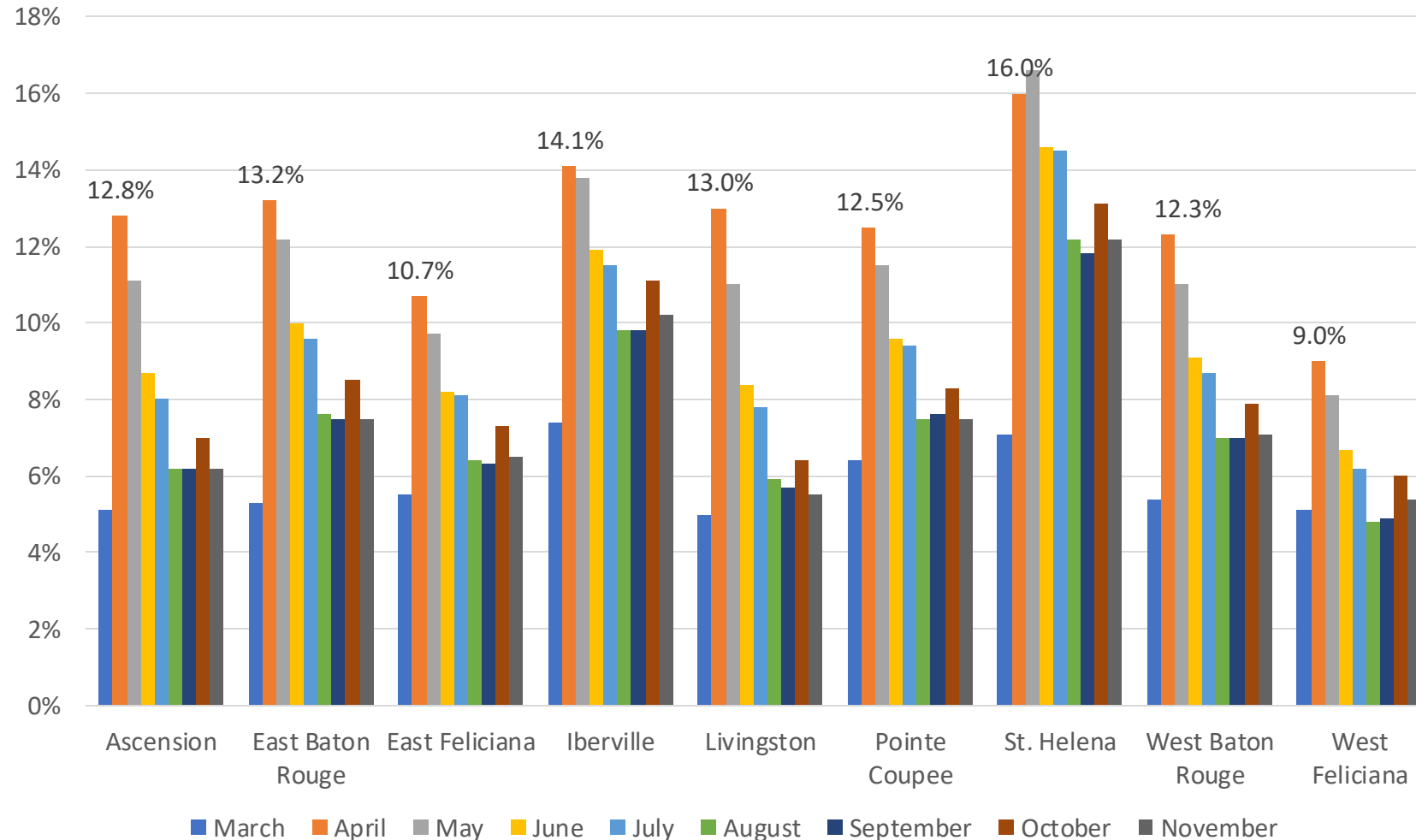


- Job recovery in Baton Rouge and New Orleans has lagged that of out-of-state peers, as well as Lafayette.
- Part of this is due to state COVID policy – Louisiana has more restrictive regulations on bars and restaurants than other states in the region, and that sector is a third of jobs lost.

# Capital Region COVID-19 Indicator Dashboard

There is significant variation between parishes concerning return to work.

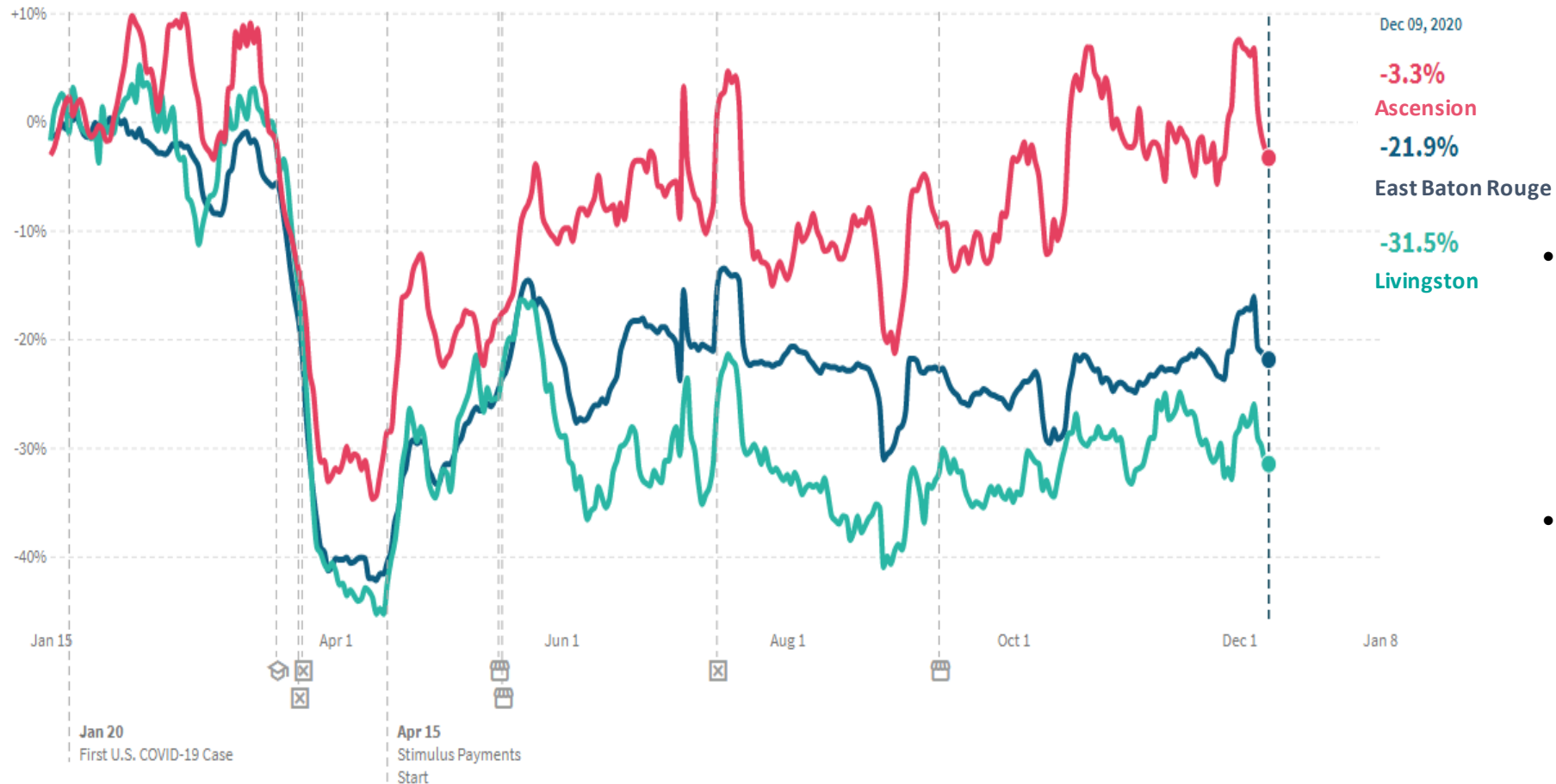
## Unemployment Rates by Parish



- Unemployment fell in each parish in the metro area from October to November
- While the regional unemployment rate (7.1%) is slightly higher than the US rate (6.4%), it is slightly lower than the state rate (8.1%)
- An ongoing question is whether the elevated unemployment rate is due to ongoing business restrictions or permanent business closures.

# Capital Region COVID-19 Indicator Dashboard

How has small business revenue been impacted by the pandemic?



- While small business revenue is near pre-pandemic levels in Ascension, it is down significantly in Livingston and East Baton Rouge.
- The revenue numbers are significantly above those early in the pandemic but have stalled below the 20s and 30s in two parishes.
- The newly enacted PPP dollars may supplement some lost revenues, but it is crucial that revenues increase for small businesses in the coming months.

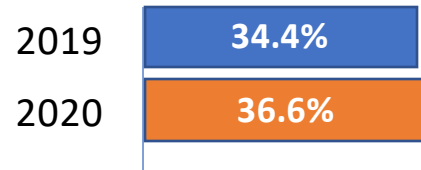
Sources: Opportunity Insights; dotted lines indicate data is preliminary.

# Capital Region COVID-19 Indicator Dashboard

How has travel been impacted during the pandemic?

## Hotel Occupancy

December 27 – January 2



Revenue December 27 – January 2



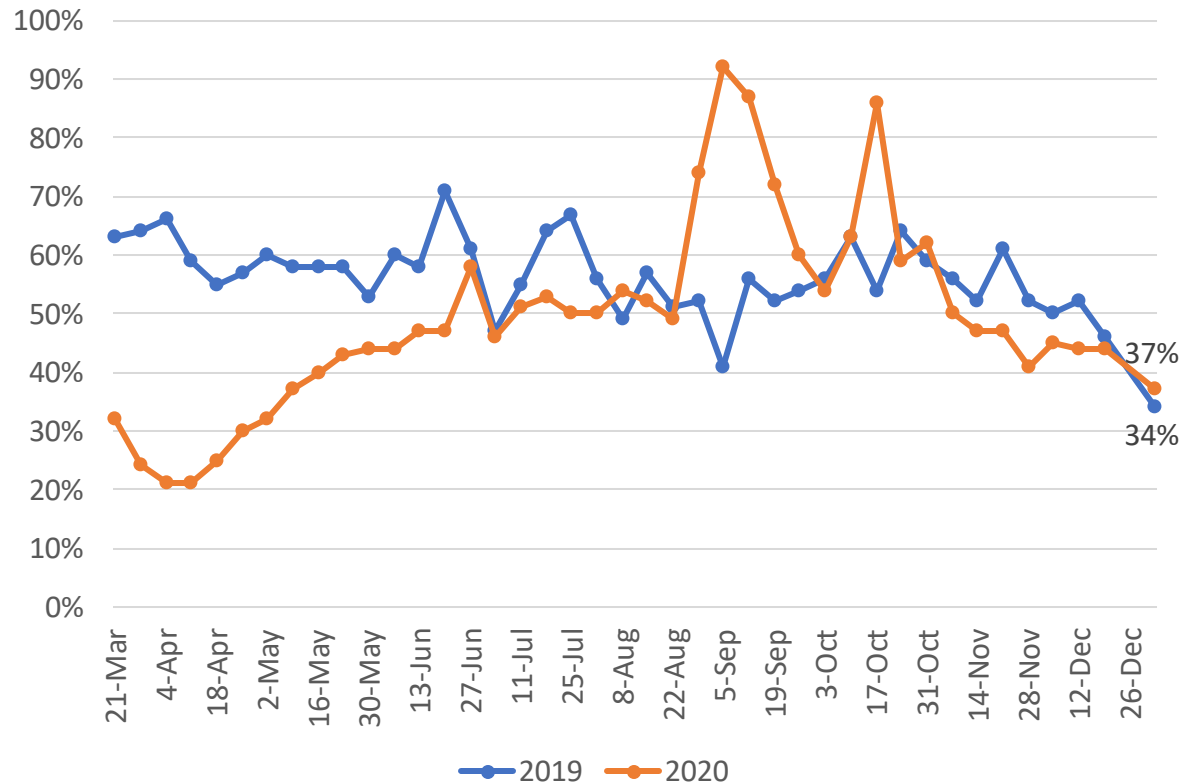
- The last week of the year had a bit higher occupancy than the last week of 2019.
- Revenues over the year are virtually identical, though lower than most weeks.
- A recent national survey of hotel owners found that 67% say they could not survive another six months at current occupancy levels, highlighting the peril this and other travel-based industries are in until vaccines are widely distributed.



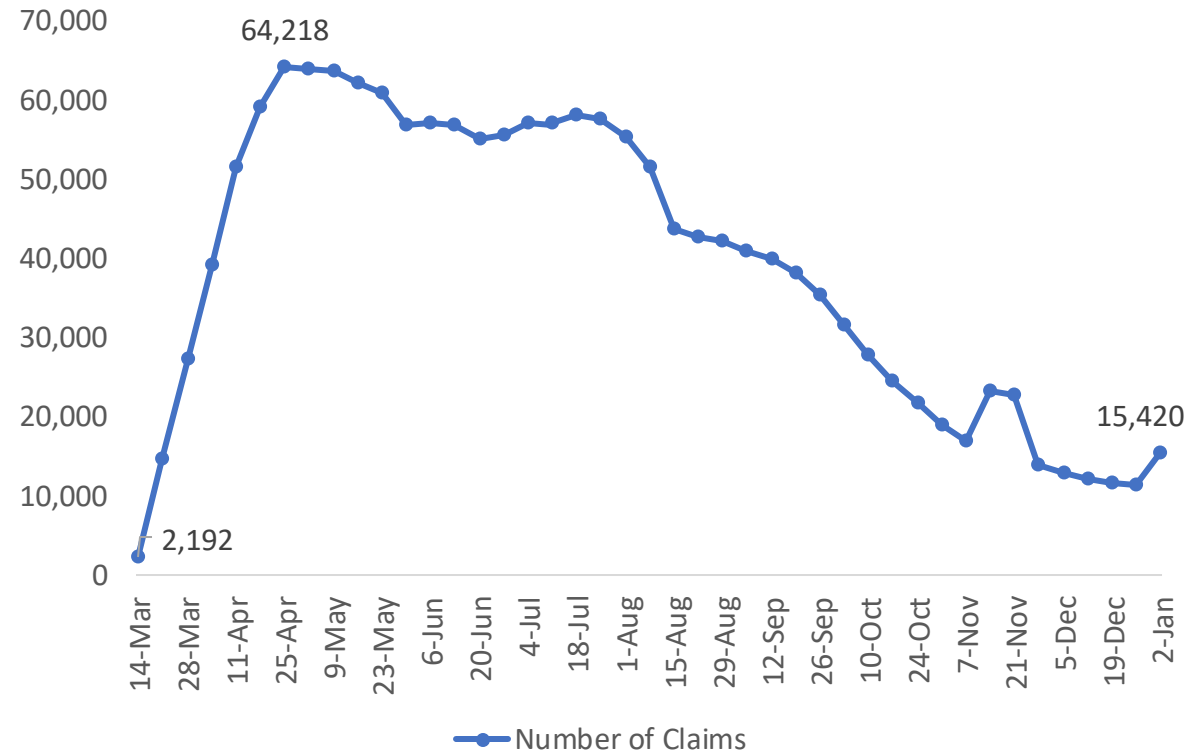
# Capital Region COVID-19 Indicator Dashboard

Hotel occupancy was slightly higher than the same week ending 2019 and beginning 2020, while unemployment claims spiked to start 2021.

### Hotel Occupancy



### Weekly Combined UI Claims



# Capital Region COVID-19 Indicator Dashboard

How has travel been impacted during the pandemic?

## CATS Transportation Ridership

Week Ending	2019 Ridership	2020 Ridership	%age Change
April 25th	46,838	15,846	-66.2%
May 30th	47,289	21,115	-55.3%
June 20th	46,730	23,944	-48.8%
July 4th	46,773	22,558	-51.8%
August 15th	50,714	25,192	-50.3%
September 12th	53,930	23,503	-56.4%
November 28th	38,163	13,324	-65.1%
December 19th	45,969	21,841	-52.5%
January 2nd	40,349	18,670	-53.7%

- CATS ridership was down over-the-week and still down significantly from 2019.

## Residential Travel

Parish	Retail & Recreation	Grocery & Pharmacy	Parks	Transit Stations	Workplace	Residential
Ascension	-12%	-6%	-	-	-8%	+6%
East Baton Rouge	-27%	-15%	-30%	-35%	-17%	+6%
East Feliciana	-	-	-	-	-68%	-
Iberville	-57%	-33%	-	-16%	-16%	+13%
Livingston	-12%	-1%	-3%	-1%	-11%	+4%
Point Coupee	-	-	-	-	-9%	-
St. Helena	-	-	-	-	-58%	-
West Baton Rouge	-18%	+16%	-	+23%	-19%	+16%
West Feliciana	-	-	-	-	-70%	-

- Most parishes saw a sharp decrease in Retail & Recreation and Grocery & Pharmacy travel, but an increase in travel to Workplaces.

Source: Google Mobility Change Report, January 3, 2021;  
Capital Area Transit System.